



Hot Air and Plastic Welding Solutions



General Catalog



Leister Brand Products

Quality for Reliability

With innovative ideas and extensive application knowledge, we develop modules, devices and machines for the world market. Our focus is always on functionality, ergonomics and attractive design. Our consistent process and quality management from the product idea to the end of the service life of our products ensures the Leister quality that has been known for decades and meets the highest demands. Leister stands for performance in premium products – around the clock and around the globe.

We know how.

Content

We are Leister

Page 4

Heat Guns

Page 12

Extrusion Welders

Page 24

Welding Machines

Page 34

Blowers

Page 56

Grooving Devices

Page 60

Testing Instruments

Page 64

Accessories

Page 72

We are Leister

Experienced engineers, product managers and specialists from ISO-9001-certified Leister AG in Switzerland develop products and systems for plastic welding applications and for generating industrial process heat. Based on innovative technologies including hot air, contact heat, extrusion, laser and infrared, and our passion for customized solutions, we're able to significantly influence our market segment and set high standards worldwide.

Our employees are proud to produce high-quality premium products offering strong, reliable performance. Close cooperation with our worldwide customers, sales partners and suppliers is essential for our mutual success. Local experts provide sales and service support to our customers in over 100 countries. Eight country subsidiaries and 130 sales and service points guarantee our worldwide presence and customer proximity.



Global Leader in Plastics Processing

Leister is characterized by products featuring a wide range of technologies for processing plastics and designed for a broad spectrum of applications. We develop and produce application-specific products, including accessories, for welding, shrinking, forming, heating and joining plastics in our business areas of plastic welding (Plastic Welding Products) and industrial process heat, as well as laser systems (Industrial Heat and Laser Systems).

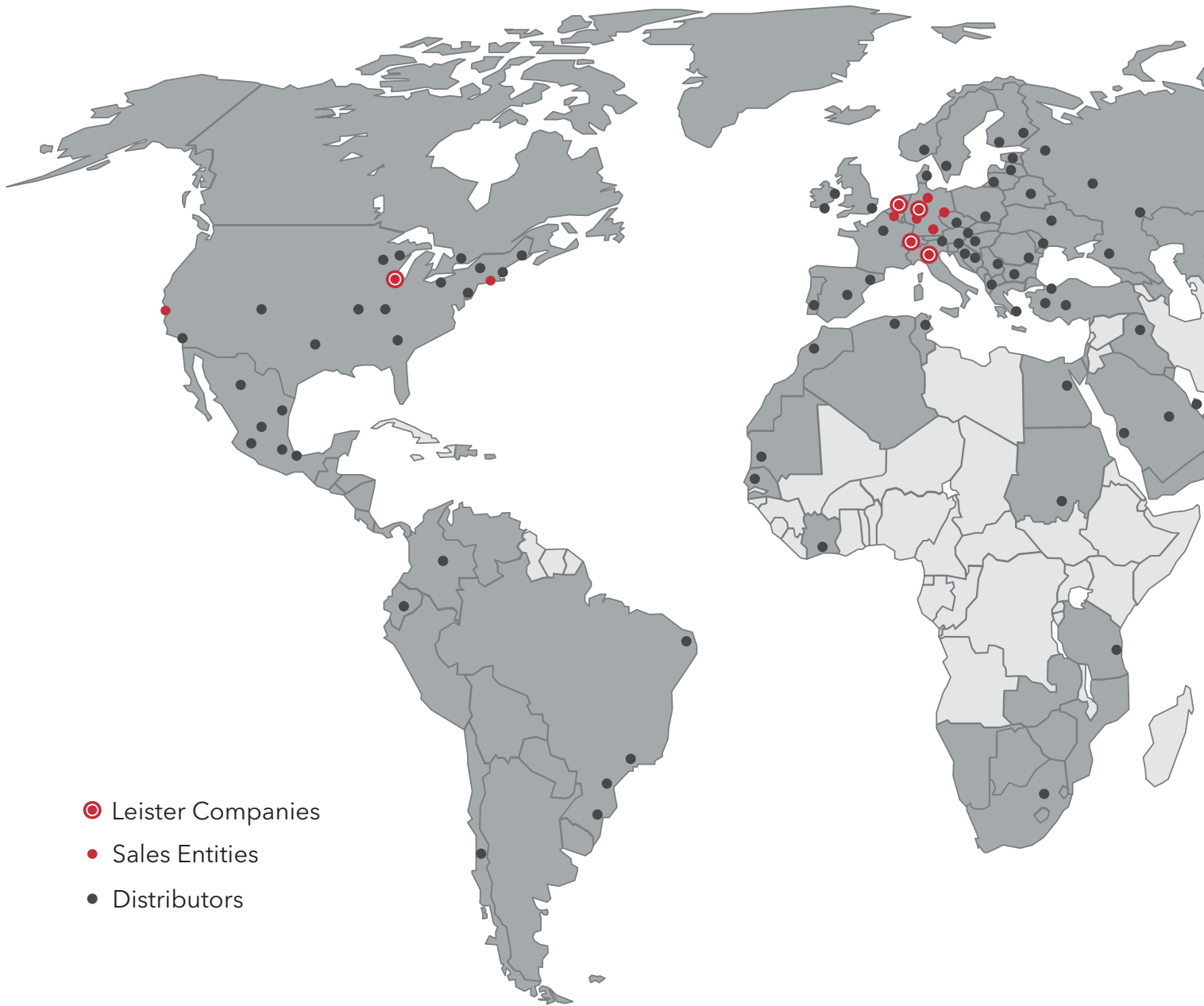
Plastic Welding Products

The Leister product range for plastic welding includes hot-air hand tools, extruders and welding machines, including comprehensive accessories for craftsmen and industry. With over 70 years of experience, we offer you products and services that set standards in your respective areas of expertise.

Industrial Heat and Laser Systems

Leister offers three technologies for the industrial sector: Hot air, infrared and laser. This means that we cover the majority of industrial process heat and plastic connection applications. You will find the right solution for your challenge in our wide range of products.





Global Presence and Customer Proximity

Our worldwide sales and service network, with 130 sales and service points for Leister products, ensures presence and proximity on all continents.

For decades, we have enjoyed close customer relationships through our global presence with eight country subsidiaries and our close network of local sales and service partners. Additionally, you can find Leister products in our online shops.



Headquarters

Leister AG

Galileo-Strasse 10
6056 Kaegiswil
Switzerland

+41 41 662 74 74
leister@leister.com
leister-group.com

Development & Manufacturing of the Brand Leister

Leister Technologies AG

Riedstrasse 10
6060 Sarnen
Switzerland

+41 41 662 74 74
leister@leister.com
leister.com

Development & Manufacturing of the Brand Axetris

Axetris AG

Schwarzenbergstrasse 10
6056 Kaegiswil
Switzerland

+41 41 662 76 76
axetris@axetris.com
axetris.com

We are local. Worldwide.

Our sales and service partners regularly participate in training courses for applications, products and repairs and are certified accordingly. This way, we guarantee our customers competent service worldwide in accordance with our high standards.

Modern logistics hubs, as well as equipment and spare parts warehouses in all countries with a Leister representative, ensure deliveries worldwide.

Services

Do you want to know which Leister products best meet your requirements? Do you have a specific challenge when working with a Leister product? Do you need information on consumables and spare parts?

Leister services at a glance

Leister offers the following services:

- Product advice
- Application advice
- Training
- Repair
- Advice on accessories, consumables and spare parts

Our sales and service points

Scan the QR code with the camera on your smartphone or tablet to access the worldwide network of Leister sales and service points.



Leister Academy

The Leister Academy promotes the knowledge and professional competence of our customers, sales partners and employees. It offers many training sessions for different target groups and needs.

Leister Academy experts convey their specialized knowledge in several languages - both in digital media and in on-site training courses. The Leister Academy offers:

- Technical training for various product segments
- Various e-learning media (online trainings and webinars)
- Training and development programs
- Classroom and remote training programs on various topics
- Train the Trainer programs



Innovation and Technology

Leister is the technology leader in its market segments. Our core technologies - hot air, contact heat, extrusion, laser and infrared - are crucial for the long-term success of our customers.

Experts from research and development as well as product management work closely together to continuously develop our product portfolio. This allows them to focus on customer needs, market conditions and new application possibilities and material requirements.

Research and development

Decades of experience in joining plastics and in industrial process heat make us your qualified partner. We develop new and optimize existing products with great passion, and in exchange with our customers from industry, construction and trade. Our customers benefit from high quality, reliability, innovation and efficiency.

Innovation drives us

15% of our employees work in research and development. Specialists from the fields of product management, process engineering, mechanical engineering, electrical engineering and product design develop the products and solutions of tomorrow. Forward-thinking technologies are established early on and taken into account in product development, thanks to our focus on customer needs.

Certified products meet global standards

Our products are designed and developed according to national and international standards. Product standards, such as ISO, IEC, EN or UL standards, are also taken into account, as well as application-related standards and guidelines.

In addition, accredited and independent third parties check our products for compliance with standards. If the products meet the required criteria, they are certified and carry the UL Listing Mark and/or the CE mark as well as various local certifications, for example. These certificates are issued under the condition that the product manufacturer permits regular checks. Within the scope of unannounced audits, inspectors ensure that production is in accordance with the test sample.



**GPS supported
myLeister app**

Leister-Quality-System (LQS)

LQS and myLeister app guarantee you market benefits. Thanks to LQS, you and your customers receive documented evidence of the welding quality.

With the LQS function and the myLeister app, you can record the relevant welding parameters, temperature, speed, air volume, output and welding force during welding. This makes functions for evaluating your welding data available to you.

In the export function of the myLeister app, simply save the recorded data in PDF reports and send them by email. The reports contain clear representations of the parameters as graphs and in table form. Subsequent archiving is guaranteed securely via the myLeister cloud.

Both you and your clients benefit

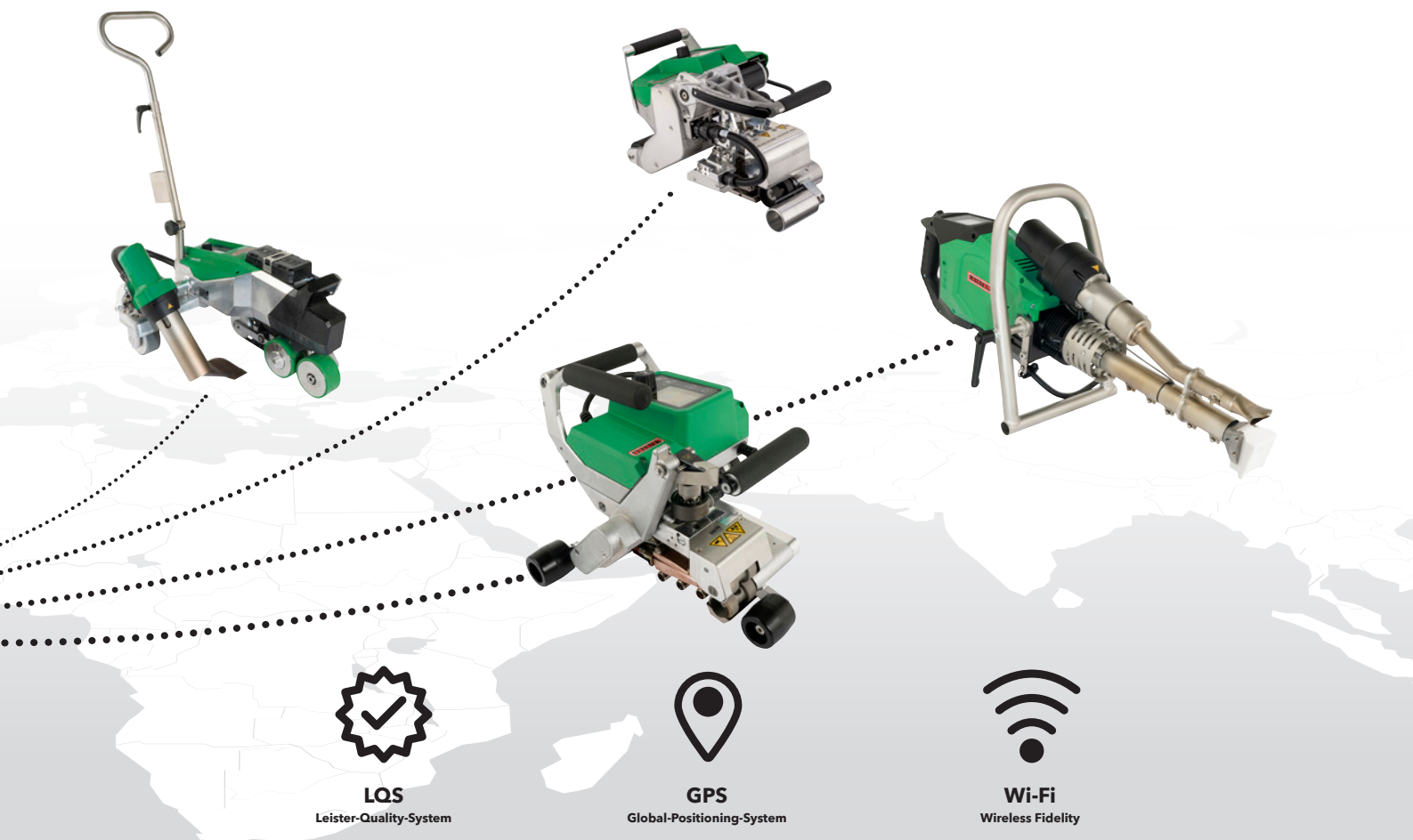
The LQS will provide you and your clients with proof of the weld quality, including GPS coordinates. This builds trust in your work and an unbeatable advantage over competitors.

Check the weld quality thanks to LQS and GPS directly on the construction site

With the GPS function, you can assign the weld seam documentation exactly to the location where they were welded. This gives you the option of testing the weld quality directly on the construction site. This is because you can quickly and reliably identify possible defects in your weld seam in the LQS reports. The GPS coordinates help you to find the affected area quickly and easily so you can make any corrections, if necessary.

myLeister app

You can download the myLeister app free of charge from your app store (iOS) or from the Google Play Store (Android). Why not register today and take advantage of the numerous benefits offered by the app.



Heat Guns





TRIAC AT



The TRIAC AT heat gun is designed to weld and mold plastic. The temperature and air quantity can be set separately by means of its e-Drive control unit.

TRIAC ST



The TRIAC ST is a robust, universally versatile heat gun for welding plastic membranes, and shrinking and molding various thermoplastics.

Technical data

Voltage	100 V; 120 V; 220 V; 230 V	
Frequency	50/60 Hz; 60 Hz	
Power	1500-1600 W	
Temperature	40-620 °C	104.0-1148.0 °F
Temperature setting stepless	Yes	
Airflow (20°C)	120-240 l/min	4.23-8.47 cfm
Stepless air volume adjustment	Yes	
Static pressure	3000 Pa	0.43 psi
Eco-Mode	Yes	
Display	Yes	
e-Drive	Yes	
Outdoor use	Yes	
Nozzle connection ø	31.5 mm / 1.25 in; M14	
Length	335.0 mm	13.18 in
Device diameter	90 mm	3.54 in
Handle diameter	56 mm	2.2 in
Weight	1.02 kg	2.24 lb
Power cable length	3.0 m	9.84 ft
Noise emission level	67 dB (A)	
Approvals	CE; KC; S+; UL	
Protection class	II	
Country of origin	CH	

Technical data

Voltage	100 V; 120 V; 220 V; 230 V	
Frequency	50/60 Hz; 60 Hz	
Power	1500-1600 W	
Temperature	40-700 °C	104.0-1292.0 °F
Temperature setting stepless	Yes	
Airflow (20°C)	240 l/min	8.47 cfm
Stepless air volume adjustment	No	
Static pressure	3000 Pa	0.43 psi
Eco-Mode	No	
Display	No	
e-Drive	No	
Outdoor use	Yes	
Nozzle connection ø	31.5 mm / 1.25 in; M14	
Length	338.0 mm	13.3 in
Device diameter	90 mm	3.54 in
Handle diameter	56 mm	2.2 in
Weight	0.99 kg	2.18 lb
Power cable length	3.0 m	9.84 ft
Noise emission level	67 dB (A)	
Approvals	CE; KC; S+; UL	
Protection class	II	
Country of origin	CH	

Product items

TRIAC AT, 230V/1600W, EU plug	141.314
TRIAC AT, 120V/1600W, US plug	141.316
TRIAC AT, 100V/1500W, JP plug	141.317
TRIAC AT, 120V/1600W, CEE 3/16	141.319
TRIAC AT, 230V/1600W, UK plug	141.320
TRIAC AT, 230V/1600W, AU plug	141.321
TRIAC AT, 230V/1600W, CH plug	141.322
TRIAC AT, 230V/1600W, CN plug	141.323
TRIAC AT, 230V/1600W, M14, EU plug	142.737
TRIAC AT, 220V/1600W, KR plug	148.005

Product items

TRIAC ST, 230V/1600W, EU plug	141.227
TRIAC ST, 120V/1600W, US plug	141.228
TRIAC ST, 100V/1500W, JP plug	141.230
TRIAC ST, 120V/1600W, CEE 3/16	141.308
TRIAC ST, 230V/1600W, UK plug	141.309
TRIAC ST, 230V/1600W, AU plug	141.310
TRIAC ST, 230V/1600W, CH plug	141.311
TRIAC ST, 230V/1600W, CN plug	141.312
TRIAC ST, 230V/1600W, M14, EU plug	144.013
TRIAC ST, 220V/1600W, KR plug	153.891



Configure
product



Configure
product

ELECTRON ST



With a power of 3400 Watts, the ELECTRON ST is an especially strong heat gun. Well-suited for professional welding of modified bitumen and thermoplastics with high material strength.

GHIBLI AW



The robust and ergonomically formed GHIBLI AW heat gun is designed for shrinking cables, heating and forming plastic parts in the auto industry and for overlap welding truck tarpaulins.

Technical data

Voltage	120 V; 200 V; 220 V; 230 V	
Frequency	50/60 Hz; 60 Hz	
Power	2300-3400 W	
Temperature	40-650 °C	104.0-1202.0 °F
Temperature setting stepless	Yes	
Airflow (20°C)	360 l/min	12.71 cfm
Stepless air volume adjustment	No	
Static pressure	3400 Pa	0.49 psi
Eco-Mode	No	
Display	No	
e-Drive	No	
Outdoor use	Yes	
Nozzle connection ø	50 mm / 2 in	
Length	338.0 mm	13.3 in
Device diameter	90 mm	3.54 in
Handle diameter	56 mm	2.2 in
Weight	1.18 kg	2.6 lb
Power cable length	3.0 m	9.84 ft
Noise emission level	67 dB (A)	
Approvals	CE; KC; S+	
Protection class	II	
Country of origin	CH	

Technical data

Voltage	100 V; 120 V; 230 V	
Frequency	50/60 Hz	
Power	1500-2300 W	
Temperature	65-620 °C	149.0-1148.0 °F
Temperature setting stepless	Yes	
Airflow (20°C)	140-250 l/min	4.94-8.82 cfm
Stepless air volume adjustment	No	
Static pressure	3200 Pa	0.46 psi
Eco-Mode	No	
Display	Yes	
e-Drive	Yes	
Outdoor use	Yes	
Nozzle connection ø	36.5 mm / 1.45 in	
Length	280.0 mm	11.02 in
Width	90.0 mm	3.54 in
Handle diameter	45 mm	1.77 in
Weight	1.18 kg	2.6 lb
Power cable length	3.0 m	9.84 ft
Noise emission level	67 dB (A)	
Approvals	CE; S+	
Protection class	II	
Country of origin	CH	

Product items

ELECTRON ST, 120V/2400W, US plug	145.562
ELECTRON ST, 120V/2400W, CEE 3/32	145.563
ELECTRON ST, 200V/3000W, JP plug	145.564
ELECTRON ST, 230V/3400W, AU plug	145.565
ELECTRON ST, 230V/3400W, CN plug	145.566
ELECTRON ST, 230V/3400W, EU plug	145.567
ELECTRON ST, 230V/3400W, CEE 3/16	145.568
ELECTRON ST, 230V/3400W, w/o plug	145.574
ELECTRON ST, 230V/2300W, EU plug	149.673
ELECTRON ST, 220V/3400W, KR plug	154.839

Product items

GHIBLI AW, 230V/2300W, EU plug	148.061
GHIBLI AW, 120V/1800W, US plug	148.078
GHIBLI AW, 100V/1500W, JP plug	148.079
GHIBLI AW, 230V/2300W, UK plug	150.168
GHIBLI AW, 230V/2300W, CH plug	150.169
GHIBLI AW, 120V/1800W, CEE 3/16	150.170



Configure
product



Configure
product

SOLANO AT



The SOLANO AT is the first digital heat gun that supports real temperature calibration in connection with the myLeister app (iOS, Android, Windows), regardless of any attached nozzle. The Eco-Mode helps to reduce electricity costs.

Technical data

Voltage	100 V; 120 V; 220 V; 230 V	
Frequency	50/60 Hz; 60 Hz	
Power	1500-2300 W	
Temperature	50-650 °C	122.0-1202.0 °F
Temperature setting stepless	Yes	
Airflow (20°C)	210-350 l/min	7.41-12.36 cfm
Stepless air volume adjustment	Yes	
Static pressure	2300 Pa	0.33 psi
Eco-Mode	Yes	
Display	Yes	
e-Drive	No	
Outdoor use	No	
Nozzle connection ø	36.5 mm / 1.45 in	
Length	270.0 mm	10.62 in
Width	75.0 mm	2.95 in
Handle diameter	45 mm	1.77 in
Weight	0.75 kg	1.65 lb
Power cable length	3.0 m	9.84 ft
Noise emission level	< 65 dB(A)	
Approvals	CE; KC; S+; UL	
Protection class	II	
Country of origin	CH	

Product items

SOLANO AT, 230V/2300W, EU plug	162.263
SOLANO AT, 230V/2300W, CH plug	162.265
SOLANO AT, 230V/2300W, UK plug	162.267
SOLANO AT, 230V/2300W, AU plug	162.269
SOLANO AT, 220V/2100W, KR plug	162.271
SOLANO AT, 120V/1800W, US plug	162.273
SOLANO AT, 100V/1500W, JP plug	162.275
SOLANO AT, 230V/2300W, CN plug	162.277



Configure
product

Cable shrinking



GHIBLI



The GHIBLI is a universal heat gun suited for numerous industrial applications. For example, cable shrinking in the electronics industry and for plastic processing in orthopedics.

HOT JET S



The HOT JET S is a particularly compact and handy heat gun. Equipped with an ergonomic handle and infinitely adjustable temperature, the HOT JET S is ideal for longer welding work.

Technical data

Voltage	100 V; 120 V; 230 V	
Frequency	50/60 Hz	
Power	1500-2000 W	
Temperature	20-600 °C	68.0-1112.0 °F
Temperature setting stepless	Yes	
Airflow (20°C)	300-350 l/min	10.59-12.36 cfm
Stepless air volume adjustment	No	
Static pressure	1500-2100 Pa	0.21-0.3 psi
Eco-Mode	No	
Display	No	
e-Drive	No	
Outdoor use	Yes	
Nozzle connection ø	36.5 mm / 1.45 in	
Length	195.0 mm	7.67 in
Width	85.0 mm	3.34 in
Handle diameter	57 mm	2.24 in
Weight	1.2 kg	2.64 lb
Power cable length	3.0 m	9.84 ft
Noise emission level	70 dB (A)	
Approvals	CE; UL	
Protection class	II	
Country of origin	CH	

Product items

GHIBLI, 230V/2000W, EU plug	101.881
GHIBLI, 230V/2000W, CH plug	101.882
GHIBLI, 230V/2000W, AU plug	101.883
GHIBLI, 120V/1500W, CEE 3/16	101.889
GHIBLI, 120V/1500W, US plug	101.891
GHIBLI, 100V/1500W, JP plug	101.892



Configure
product

Technical data

Voltage	100 V; 120 V; 220 V; 230 V	
Frequency	50/60 Hz; 60 Hz	
Power	460 W	
Temperature	20-600 °C	68.0-1112.0 °F
Temperature setting stepless	Yes	
Airflow (20°C)	20-80 l/min	0.7-2.82 cfm
Stepless air volume adjustment	Yes	
Static pressure	1600 Pa	0.23 psi
Eco-Mode	No	
Display	No	
e-Drive	No	
Outdoor use	Yes	
Nozzle connection ø	21.3 mm / 0.85 in	
Length	235.0 mm	9.25 in
Device diameter	70 mm	2.75 in
Handle diameter	40 mm	1.57 in
Weight	0.36 kg	0.79 lb
Power cable length	3.0 m	9.84 ft
Noise emission level	56 dB (A)	
Approvals	CE; KC; S+; UL	
Protection class	II	
Country of origin	CH	

Product items

HOT-JET S, 230V/460W, EU plug	100.648
HOT-JET S, 230V/460W, CH plug	100.688
HOT-JET S, 230V/460W, AU plug	100.854
HOT-JET S, 120V/460W, US plug	100.859
HOT-JET S, 120V/460W, w/o plug	100.862
HOT-JET S, 100V/460W, JP plug	100.863
HOT-JET S, 230V/460W, CN plug	138.414
HOT-JET S, 220V/460W, KR plug	140.030



Configure
product

HOTWIND PREMIUM



The durable HOTWIND PREMIUM heat gun is suitable for a range of industrial hot air applications. Also available are various accessories, such as tubular nozzles, overlap welding nozzles, angled nozzles, and stainless-steel filters.

HOTWIND SYSTEM



Thanks to its brushless motor, the HOTWIND SYSTEM is durable and requires very little maintenance. Thanks to the interface with alarm contact, heating output and air volume can be controlled remotely.

Technical data

Voltage	120 V; 220 V; 230 V; 400 V	
Frequency	50/60 Hz; 60 Hz	
Power	2300-5400 W	
Max. air outlet temperature	650-800 °C	1202-1472 °F
Airflow (20°C)	200-900 l/min	7.06-31.78 cfm
Static pressure	800-1000 Pa	0.11-0.14 psi
Max. ambient temperature	60 °C	140 °F
Overheating protection	Yes	
Display	No	
Nozzle connection ø	62 mm / 2.45 in	
Length	332.0-357.0 mm	13.07-14.05 in
Width	106.0 mm	4.17 in
Height	179.0 mm	7.04 in
Weight	2.2-2.4 kg	4.85-5.29 lb
Power cable length	3.0 m	9.84 ft
Noise emission level	< 70 dB(A)	
Approvals	CE; EAC; KC; S+; UKCA; cURus	
Protection class	II	
Country of origin	CH	

Technical data

Voltage	120 V; 220 V; 230 V; 400 V	
Frequency	50/60 Hz; 60 Hz	
Power	2300-5400 W	
Max. air outlet temperature	650 °C	1202 °F
Air temperature control	Closed loop	
Airflow (20°C)	200-900 l/min	7.06-31.78 cfm
Static pressure	800-1000 Pa	0.11-0.14 psi
Max. ambient temperature	60 °C	140 °F
Overheating protection	Yes	
Display	Yes	
Interfaces	0-10V; 4-20mA	
Nozzle connection ø	62 mm / 2.45 in	
Length	332.0 mm	13.07 in
Width	106.0 mm	4.17 in
Height	179.0 mm	7.04 in
Weight	2.2-2.4 kg	4.85-5.29 lb
Power cable length	3.0 m	9.84 ft
Noise emission level	< 70 dB(A)	
Approvals	CE; EAC; KC; S+; UKCA; cURus	
Protection class	II	
Country of origin	CH	

Product items

HOTWIND PREMIUM, 120V/2300W, w/o plug	140.095
HOTWIND PREMIUM, 230V/3680W, w/o plug	140.098
HOTWIND PREMIUM, 230V/3100W, EU plug	142.608
HOTWIND PREMIUM, 230V/3680W, EU plug	142.609
HOTWIND PREMIUM, 230V/2300W, EU plug	142.612
HOTWIND PREMIUM, 230V/2300W, w/o plug	142.643
HOTWIND PREMIUM, 400V/5400W, w/o plug	142.644
HOTWIND PREMIUM, 220V/3350W, KR plug	143.299

Product items

HOTWIND SYSTEM, 230V/2300W, w/o plug	140.096
HOTWIND SYSTEM, 120V/2300W, w/o plug	142.636
HOTWIND SYSTEM, 230V/3700W, w/o plug	142.640
HOTWIND SYSTEM, 400V/5400W, w/o plug	142.641
HOTWIND SYSTEM, 230V/3700W, EU plug	142.645
HOTWIND SYSTEM, 230V/2300W, EU plug	142.646
HOTWIND SYSTEM, 220V/3350W, 60Hz, KR plug	143.804



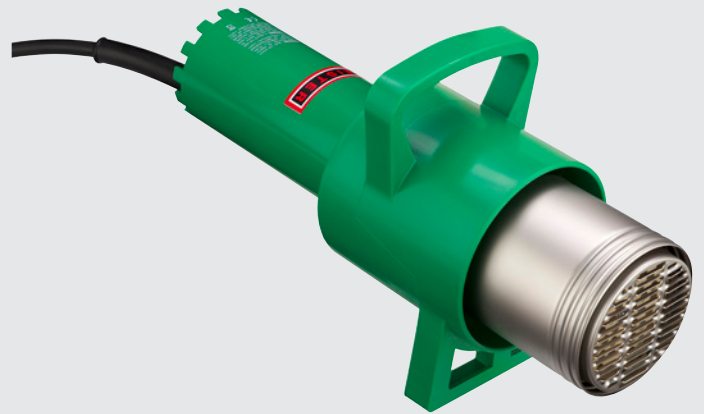
Configure
product



Configure
product



FORTE S3



Leister's most powerful heat gun, FORTE S3, facilitates flame-free, safe film shrinking and hood shrinking for packaged goods on pallets.

Technical data

Voltage	230 V; 400 V	
Frequency	50/60 Hz	
Power	10000 W	
Temperature	650 °C	1202.0 °F
Temperature setting stepless	No	
Airflow (20°C)	1000 l/min	35.31 cfm
Stepless air volume adjustment	No	
Static pressure	1200 Pa	0.17 psi
Eco-Mode	No	
Display	No	
e-Drive	No	
Outdoor use	Yes	
Nozzle connection ø	92 mm / 3.6 in	
Length	390.0 mm	15.35 in
Device diameter	132 mm	5.19 in
Handle diameter	84 mm	3.3 in
Weight	3.4 kg	7.49 lb
Power cable length	10.0 m	32.8 ft
Noise emission level	74 dB (A)	
Approvals	CE; S+	
Protection class	II	
Country of origin	CH	

Product items

FORTE S3, 3 x 400V/10kW, CEE 5/16	102.027
FORTE S3, 3 x 230V/10kW, CEE 5/32	102.030



Configure
product

DIODE S



Thanks to the air hose connection for an external Leister blower like MINOR, ROBUST or AIRSTREAM, the DIODE S welding device is particularly easy and convenient to use. Ideal for mobile installation use.

DIODE S with MINOR



The hot air tool DIODE S with the MINOR blower in the practical kit is the right hot air combination for assembly work on construction sites. Supplied connected to one another in a fixed manner, the devices are ready for direct use.

Technical data

Voltage	100 V; 120 V; 200 V; 230 V	
Frequency	50/60 Hz	
Power	1400-2000 W	
Temperature	20-600 °C	68.0-1112.0 °F
Temperature setting stepless	Yes	
Display	No	
Outdoor use	Yes	
Nozzle connection ø	31.5 mm / 1.25 in; M14	
Length	265.0 mm	10.43 in
Device diameter	57 mm	2.24 in
Handle diameter	40 mm	1.57 in
Weight	0.46 kg	1.01 lb
Power cable length	3.0 m	9.84 ft
Approvals	CB Certification; CE; UKCA	
Protection class	II	
Country of origin	CH	

Technical data

Voltage	100 V; 120 V; 230 V	
Frequency	50/60 Hz	
Power	1500-1700 W	
Temperature	20-600 °C	68.0-1112.0 °F
Temperature setting stepless	Yes	
Stepless air volume adjustment	No	
Static pressure	5000 Pa	0.72 psi
Eco-Mode	No	
Display	No	
e-Drive	No	
Outdoor use	Yes	
Nozzle connection ø	31.5 mm / 1.25 in; M14	
Length	256.0 mm	10.07 in
Device diameter	57 mm	2.24 in
Handle diameter	40 mm	1.57 in
Power cable length	3.0 m	9.84 ft
Air hose length	1.5-3.0 m	4.92-9.84 ft
Noise emission level	67 dB (A)	
Approvals	CB Certification; CE; UKCA	
Protection class	II	
Country of origin	CH	

Product items

DIODE S, 230V/2000W, EU plug	101.279
DIODE S, 230V/2000W, M14, EU plug	101.280
DIODE S, 230V/1600W, EU plug	101.281
DIODE S, 230V/1600W, M14, EU plug	101.282
DIODE S, 230V/1600W, CH plug	101.283
DIODE S, 230V/1600W, AU plug	101.285
DIODE S, 200V/1400W, w/o plug	101.289
DIODE S, 120V/1600W, US plug	101.291
DIODE S, 120V/1600 W, M14, US plug	101.292
DIODE S, 120V/1600W, CEE 3/16	101.293
DIODE S, 120V/1600W, M14, CEE 3/16	101.294
DIODE S, 100V/1400W, JP plug	101.297
DIODE S, 230V/1600W, CN plug	135.971



Configure product

Product items

DIODE S/MINOR, 230V/1700W, 3m, EU plug	101.440
DIODE S/MINOR, 230V/1700W, 1.5m, EU plug	101.441
DIODE S/MINOR, 120V/1700W, US plug	101.447
DIODE S/MINOR, 100V/1500W, JP plug	101.449
DIODE S/MINOR, 230V/1700W, 3m, M14, EU plug	108.869
DIODE S/MINOR, 230V/1700W, 1.5m, M14, EU plug	108.870
DIODE S/MINOR, 230V/1700W, CN plug	136.241



Configure product

LABOR S



The small and handy hot air tool LABOR S is suitable for particularly demanding work such as soldering, shrinking, plastic welding in confined spaces, and restoration of art works and antiques.

LABOR S with MINOR



The LABOR S hot air tool is the ideal and practical combination for particularly small-surface welding and soldering work on poorly accessible areas. The kit includes the MINOR blower.

Technical data

Voltage	120 V; 230 V	
Frequency	50/60 Hz	
Power	600-800 W	
Temperature	20-600 °C	68.0-1112.0 °F
Temperature setting stepless	Yes	
Display	No	
Outdoor use	Yes	
Nozzle connection ø	21.3 mm / 0.85 in	
Length	180.0 mm	7.08 in
Device diameter	40 mm	1.57 in
Handle diameter	32 mm	1.25 in
Weight	0.18 kg	0.39 lb
Power cable length	3.0 m	9.84 ft
Approvals	CE; UKCA	
Protection class	II	
Country of origin	CH	

Technical data

Voltage	120 V; 230 V	
Frequency	50/60 Hz	
Power	700-900 W	
Temperature	20-600 °C	68.0-1112.0 °F
Temperature setting stepless	Yes	
Stepless air volume adjustment	No	
Static pressure	5000 Pa	0.72 psi
Eco-Mode	No	
Display	No	
e-Drive	No	
Outdoor use	Yes	
Nozzle connection ø	21.3 mm / 0.85 in	
Length	180.0 mm	7.08 in
Device diameter	40 mm	1.57 in
Handle diameter	32 mm	1.25 in
Power cable length	3.0 m	9.84 ft
Air hose length	1.5-3.0 m	4.92-9.84 ft
Noise emission level	67 dB (A)	
Approvals	CE; UKCA	
Protection class	II	
Country of origin	CH	

Product items

LABOR S, 230V/800W, junction box, EU plug	101.716
LABOR S, 120V/600W, junction box, US plug	101.721
LABOR S, 230V/800W, junction box, SI-hose, EU plug	101.727
LABOR S, 230V/800W, flat cable, w/o plug	101.735
LABOR S, 120V/600W, flat cable, w/o plug	101.736
LABOR S, 230V/800W, flat cord, w/o plug	112.048
LABOR S, 230V/800W, UK plug	112.233

Product items

LABOR S/MINOR, 230V/900W, 3m, EU plug	101.748
LABOR S/MINOR, 230V/900W, 3m, CH plug	101.749
LABOR S/MINOR, 230V/900W, EU plug	101.754
LABOR S/MINOR, 120V/700W, EU plug	101.755



Configure
product



Configure
product

PENWELD A



The PENWELD A external-air welder is suitable for precise plastic welding in apparatus and tank construction. The work light integrated in the handle keeps the welding zone under control even in dark sections.

PENWELD S



The handy, robust PENWELD S external-air welder is intentionally simple in design to enable intuitive operation and withstand heavy loads. Different device variants cover individual needs.

Technical data

Voltage	120 V; 230 V	
Frequency	50/60 Hz	
Power	1000-1550 W	
Temperature	60-600 °C	140.0-1112.0 °F
Temperature setting stepless	Yes	
Display	Yes	
Outdoor use	Yes	
Nozzle connection ø	31.5 mm / 1.25 in; M14	
Length	254.0-282.0 mm	10.0-11.1 in
Device diameter	54 mm	2.12 in
Handle diameter	37 mm	1.45 in
Weight	0.43-0.48 kg	0.94-1.05 lb
Power cable length	0.5 m	1.64 ft
Approvals	CB Certification; CE; UKCA	
Protection class	II	
Country of origin	CH	

Technical data

Voltage	120 V; 230 V	
Frequency	50/60 Hz	
Power	1000-1550 W	
Temperature	60-600 °C	140.0-1112.0 °F
Temperature setting stepless	Yes	
Display	No	
Outdoor use	Yes	
Nozzle connection ø	31.5 mm / 1.25 in; M14	
Length	254.0-275.0 mm	10.0-10.82 in
Device diameter	54 mm	2.12 in
Handle diameter	37 mm	1.45 in
Weight	0.41-0.46 kg	0.9-1.01 lb
Power cable length	0.5 m	1.64 ft
Approvals	CE; UKCA	
Protection class	II	
Country of origin	CH	

Product items

PENWELD 305-A, 230V/1000W, 3m, M14, EU plug	173.367
PENWELD 305-A, 120V/1000W, 3m, M14, US plug	173.368
PENWELD 305-A, 230V/1000W, 3m, M14, CH plug	173.369
PENWELD 305-A, 230V/1000W, 8m, M14, EU plug	173.370
PENWELD 305-A, 230V/1000W, 8m, M14, CH plug	173.371
PENWELD 500-A, 230V/1550W, 3m, EU plug	173.376
PENWELD 500-A, 120V/1550W, 3m, US plug	173.377
PENWELD 505-A, 230V/1550W, 8m, M14, EU plug	175.598
PENWELD 500-A, 230V/1550W, 3m, CN plug	177.344
PENWELD 505-A, 230V/1550W, 8m, M14, CN plug	177.346

Product items

PENWELD 305-S, 230V/1000W, 3m, M14, EU plug	173.372
PENWELD 305-S, 230V/1000W, 3m, M14, CH plug	173.373
PENWELD 305-S, 120V/1000W, 3m, M14, US plug	173.374
PENWELD 305-S, 230V/1000W, 8m, M14, EU plug	173.375
PENWELD 500-S, 230V/1550W, 3m, EU plug	173.378
PENWELD 500-S, 120V/1550W, 3m, US plug	173.379
PENWELD 500-S, 230V/1550W, 3m, CN plug	177.345



Configure
product



Configure
product



Extrusion Welders





WELDPLAST S1



The WELDPLAST S1 extruder is functional in its applications. Pre-heated air and plastic temperature are regulated separately, which guarantees a stable welding process and high-quality welding results.

WELDPLAST S2



The WELDPLAST S2 extruder processes materials such as HDPE and PP at a high output volume. Thanks to its design, this extruder is particularly nimble when deployed and facilitates versatile, safe plastic welding.

Technical data

Voltage	100 V; 120 V; 220 V; 230 V	
Frequency	50/60 Hz; 60 Hz	
Power	1500-1800 W	
Welding additive	ø 3-4 mm / 0.12-0.16 in	
Material output ø 3 mm	0.2-0.5 kg/h	0.44-1.1 lb/h
Material output ø 4 mm	0.3-0.8 kg/h	0.66-1.76 lb/h
Welding materials	ABS; ECTFE; FPO; HDPE; LDPE; LLDPE; PA; PC; PP; PVC-C; PVC-U; PVDF; TPO	
Air guide	External	
Screw heating	Coil heater	
Air temperature control	Closed loop	
LQS	No	
Display	Yes	
Brushless blower motor	Yes	
Brushless drive motor	No	
LED Working light	Yes	
Length	435.0 mm	17.12 in
Width	91.0 mm	3.58 in
Height	264.0 mm	10.39 in
Weight	4.7 kg	10.36 lb
Power cable length	3.0-5.0 m	9.84-16.4 ft
Noise emission level	76 dB (A)	
Approvals	CB Certification; CE; KC; UKCA	
Protection class	I	
Country of origin	CH	

Product items

WELDPLAST S1, 100V/1500W, w/o plug	148.394
WELDPLAST S1, 120V/1800W, w/o plug	148.395
WELDPLAST S1, 230V/1600W, EU plug	148.396
WELDPLAST S1, 230V/1600W, UK plug	156.140
WELDPLAST S1, 220V/1500W, KR plug	169.928
WELDPLAST S1, 230V/1600W, CEE 3/16	177.272

Technical data

Voltage	200 V; 230 V	
Frequency	50/60 Hz	
Power	2400-3000 W	
Welding additive	ø 3-4 mm / 0.12-0.16 in	
Material output ø 3 mm	0.6-1.3 kg/h	1.32-2.86 lb/h
Material output ø 4 mm	1.0-2.0 kg/h	2.2-4.4 lb/h
Welding materials	HDPE; LDPE; LLDPE; PP	
Air guide	Internal	
Screw heating	Coil heater	
Air temperature control	Closed loop	
LQS	No	
Display	Yes	
Brushless blower motor	Yes	
Brushless drive motor	No	
LED Working light	No	
Length	450.0 mm	17.71 in
Width	98.0 mm	3.85 in
Height	260.0 mm	10.23 in
Weight	5.8 kg	12.78 lb
Power cable length	5.0 m	16.4 ft
Noise emission level	78 dB (A)	
Approvals	CE; KC; UKCA	
Protection class	I	
Country of origin	CH	

Product items

WELDPLAST S2, 230V/3000W, EU plug	127.215
WELDPLAST S2, 230V/3000W, CN plug	140.707
WELDPLAST S2, 200V/2400W, w/o plug	146.341
WELDPLAST S2, 230V/3000W, CEE 3/16	156.131
WELDPLAST S2, 230V/3000W, CH plug	176.839



Configure
product



Configure
product

WELDPLAST S2 PVC



The WELDPLAST S2 PVC extruder is durable and its electronics are completely sealed. As a result, it is ideal for safely welding rough plastics such as PVC and PVDF.

WELDPLAST S2 TPO



The WELDPLAST S2 TPO extruder is designed specifically for processing thermoplastic elastomers with an olefin base. Thanks to its lightweight size, it is well suited for overhead welding in tunnel construction and underground engineering.

Technical data

Voltage	200 V; 220 V; 230 V	
Frequency	50/60 Hz; 60 Hz	
Power	2400-3000 W	
Welding additive	ø 3-4 mm / 0.12-0.16 in	
Material output ø 3 mm	0.6-1.3 kg/h	1.32-2.86 lb/h
Material output ø 4 mm	1.0-2.0 kg/h	2.2-4.4 lb/h
Welding materials	HDPE; LDPE; LLDPE; PP; PVC-U	
Air guide	External	
Screw heating	Coil heater	
Air temperature control	Closed loop	
LQS	No	
Display	Yes	
Brushless blower motor	Yes	
Brushless drive motor	No	
LED Working light	No	
Length	450.0 mm	17.71 in
Width	98.0 mm	3.85 in
Height	260.0 mm	10.23 in
Weight	5.8 kg	12.78 lb
Power cable length	3.0-5.0 m	9.84-16.4 ft
Noise emission level	78 dB (A)	
Approvals	CE; KC; UKCA	
Protection class	I	
Country of origin	CH	

Product items

WELDPLAST S2 PVC, 230V/3000W, EU plug	135.724
WELDPLAST S2 PVC, 230V/3000W, CN plug	140.708
WELDPLAST S2 PVC, 200V/2400W, w/o plug	146.342
WELDPLAST S2 PVC, 230V/3000W, CEE 3/16	156.804
WELDPLAST S2 PVC, 220V/2750W, KR plug	169.929



Configure
product

Technical data

Voltage	230 V	
Frequency	50/60 Hz	
Power	3000 W	
Welding additive	ø 3-4 mm / 0.12-0.16 in	
Material output ø 3 mm	0.6-1.3 kg/h	1.32-2.86 lb/h
Material output ø 4 mm	1.0-2.0 kg/h	2.2-4.4 lb/h
Welding materials	FPO; HDPE; LDPE; LLDPE; PP; TPO	
Air guide	Internal	
Screw heating	Coil heater	
Air temperature control	Closed loop	
LQS	No	
Display	Yes	
Brushless blower motor	Yes	
Brushless drive motor	No	
LED Working light	No	
Length	450.0 mm	17.71 in
Width	98.0 mm	3.85 in
Height	260.0 mm	10.23 in
Weight	5.8 kg	12.78 lb
Power cable length	5.0 m	16.4 ft
Noise emission level	78 dB (A)	
Approvals	CE; UKCA	
Protection class	I	
Country of origin	CH	

Product items

WELDPLAST S2 TPO, 230V/3000W, EU plug	136.602
---------------------------------------	---------



Configure
product

WELDPLAST S4



The powerful WELDPLAST S4 extruder is available in two variations: for equipment and container construction with a lateral, hot air nozzle, and for underground engineering with a top-mounted, pre-heating nozzle.

WELDPLAST 600



The powerful WELDPLAST 600 hand extruder is Leister's most powerful extruder. Thanks to its high output rate, it's a convincing choice for welding large tanks and containers.

Technical data

Voltage	230 V	
Frequency	50/60 Hz	
Power	3680 W	
Welding additive	ø 3-4 mm / 0.12-0.16 in; ø 4-5 mm / 0.16-0.2 in	
Max. material output	3.8 kg/h	8.37 lb/h
Welding materials	HDPE; LDPE; LLDPE; PP	
Air guide	External	
Screw heating	Coil heater	
Air temperature control	Closed loop	
LQS	No	
Display	Yes	
Brushless blower motor	Yes	
Brushless drive motor	No	
LED Working light	No	
Length	560.0 mm	22.04 in
Width	110.0 mm	4.33 in
Height	300.0 mm	11.81 in
Weight	8.7 kg	19.18 lb
Power cable length	5.0 m	16.4 ft
Noise emission level	85 dB (A)	
Approvals	CB Certification; CE; UKCA	
Protection class	I	
Country of origin	CH	

Product items

WELDPLAST S4, 230V/3680W, PlastFab, ø3/4mm, EU plug	116.948
WELDPLAST S4, 230V/3680W, GEO, ø4/5mm, EU plug	146.812
WELDPLAST S4, 230V/3680W, PlastFab, ø4/5mm, EU plug	146.813
WELDPLAST S4, 230V/3680W, GEO, ø4/5mm, CEE 3/16	156.451

Technical data

Voltage	230 V	
Frequency	50/60 Hz	
Power	3680 W	
Welding additive	ø 4-5 mm / 0.16-0.2 in	
Material output ø 4 mm	2.6-4.0 kg/h	5.73-8.81 lb/h
Material output ø 5 mm	3.6-6.0 kg/h	7.93-13.22 lb/h
Welding materials	HDPE; PP	
Air guide	External	
Screw heating	Coil heater	
Air temperature control	Closed loop	
LQS	Yes	
Display	Yes	
Brushless blower motor	Yes	
Brushless drive motor	Yes	
LED Working light	Yes	
Length	809.0 mm	31.85 in
Width	140.0 mm	5.51 in
Height	273.0 mm	10.74 in
Weight	12.2 kg	26.89 lb
Power cable length	5.0 m	16.4 ft
Noise emission level	< 70 dB(A)	
Approvals	CE; UKCA	
Protection class	I	
Country of origin	CH	

Product items

WELDPLAST 600, 230V/3680W, CEE 3/16	170.461
-------------------------------------	---------



Configure product



Configure product

WELDPLAST 605



The WELDPLAST 605 with LQS is a powerful extruder with particularly high output and is suitable for welding geomembranes made of PE - even in large-scale civil engineering projects.

Technical data

Voltage	230 V	
Frequency	50/60 Hz	
Power	3680 W	
Welding additive	ø 4-5 mm / 0.16-0.2 in	
Material output ø 4 mm	3.9-4.8 kg/h	8.59-10.58 lb/h
Material output ø 5 mm	4.9-6.0 kg/h	10.8-13.22 lb/h
Welding materials	HDPE; LDPE; LLDPE	
Air guide	External	
Screw heating	Coil heater	
Air temperature control	Closed loop	
LQS	Yes	
Display	Yes	
Brushless blower motor	Yes	
Brushless drive motor	Yes	
LED Working light	Yes	
Length	809.0 mm	31.85 in
Width	140.0 mm	5.51 in
Height	273.0 mm	10.74 in
Weight	12.2 kg	26.89 lb
Power cable length	5.0 m	16.4 ft
Noise emission level	< 70 dB(A)	
Approvals	CE; UKCA	
Protection class	I	
Country of origin	CH	

Product items

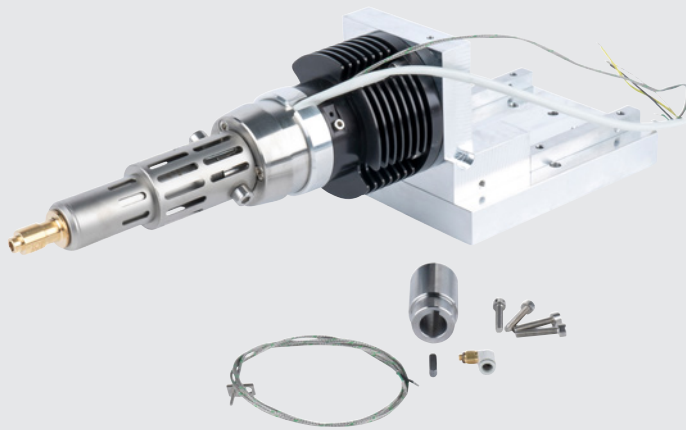
WELDPLAST 605, 230V/3680W, CEE 3/16	170.460
WELDPLAST 605, 230V/3680W, w/o shoe, CEE 3/16	174.422

Landfill and mining
membrane welding



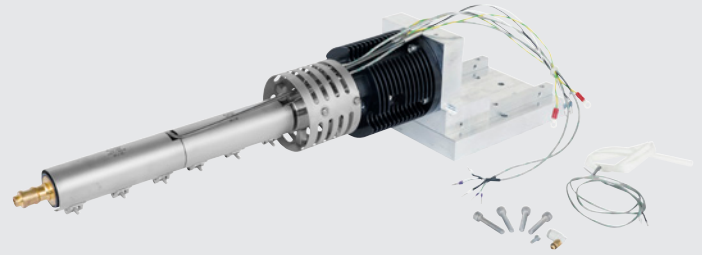
Configure
product

WELDPLAST 200-i



The WELDPLAST 200-i extruder module was designed for automated extrusion welding and 3D printing. It can be mounted onto robots, integrated into machines and is suitable for continuous operation.

WELDPLAST 610-i



The WELDPLAST 610-i extruder module is suitable for large-scale extrusion welding and 3D printing. The module has been designed for simple and fully automated use (even in continuous operation).

Technical data

Voltage	230 V	
Frequency	50/60 Hz	
Power	600 W	
Welding additive	ø 3-4 mm / 0.12-0.16 in	
Material output ø 3 mm	0.1-1.4 kg/h	0.22-3.08 lb/h
Material output ø 4 mm	0.1-2.0 kg/h	0.22-4.4 lb/h
Welding materials	ABS; HDPE; LDPE; LLDPE; PC; PS; PU; PVC-C; PVC-U	
Air guide	External	
Screw heating	Coil heater	
LQS	No	
Length	660.0 mm	25.98 in
Width	191.0 mm	7.51 in
Height	220.0 mm	8.66 in
Weight	15.0 kg	33.06 lb
Protection class	I	
Country of origin	CH	

Technical data

Voltage	230 V	
Frequency	50/60 Hz	
Power	1600 W	
Welding additive	ø 4-5 mm / 0.16-0.2 in	
Material output ø 4 mm	0.1-4.0 kg/h	0.22-8.81 lb/h
Material output ø 5 mm	0.1-8.4 kg/h	0.22-18.51 lb/h
Welding materials	HDPE; LDPE; LLDPE; PP	
Air guide	External	
Screw heating	Coil heater	
LQS	No	
Length	876.0 mm	34.48 in
Width	191.0 mm	7.51 in
Height	210.0 mm	8.26 in
Weight	22.0 kg	48.5 lb
Protection class	I	
Country of origin	CH	

Product items

WELDPLAST 200-i, 230V

163.322

Product items

WELDPLAST 610-i, 230V

172.580



Configure product



Configure product



FUSION 1



The FUSION 1 extruder is particularly easy to handle. Double-sided rod intake and rotating welding shoe guarantee maximum welding flexibility. It's suitable for plastic repairs, as well as pipeline and container construction.

FUSION 2



The FUSION 2 extruder is a stable and optimized extrusion welder that makes extrusion welding especially easy. Well-suited for PE and PP welding.

Technical data

Voltage	120 V; 220 V; 230 V	
Frequency	50/60 Hz; 60 Hz	
Power	1100-1450 W	
Welding additive	ø 3-4 mm / 0.12-0.16 in	
Material output ø 3 mm	0.2-0.5 kg/h	0.44-1.1 lb/h
Material output ø 4 mm	0.3-0.8 kg/h	0.66-1.76 lb/h
Welding materials	HDPE; LDPE; LLDPE; PE; PP; TPO	
Air guide	Internal	
Screw heating	Air heated	
Air temperature control	Closed loop	
LQS	No	
Display	Yes	
Brushless blower motor	No	
Brushless drive motor	No	
LED Working light	Yes	
Length	435.0 mm	17.12 in
Width	92.0 mm	3.62 in
Height	133.0 mm	5.23 in
Weight	3.4 kg	7.49 lb
Power cable length	3.0 m	9.84 ft
Noise emission level	< 70 dB(A)	
Approvals	CE; KC; UKCA	
Protection class	II	
Country of origin	CH	

Product items

FUSION 1, 120V/1450W, US plug	162.799
FUSION 1, 230V/1200W, EU plug	162.800
FUSION 1, 230V/1200W, CH plug	163.163
FUSION 1, 230V/1200W, AU plug	163.164
FUSION 1, 230V/1200W, CEE 3/16	163.165
FUSION 1, 220V/1100W, KR plug	166.367



Configure product

Technical data

Voltage	120 V; 220 V; 230 V	
Frequency	50/60 Hz; 60 Hz	
Power	2600-2800 W	
Welding additive	ø 4 mm / 0.16 in	
Material output ø 4 mm	1.3-1.8 kg/h	2.86-3.96 lb/h
Welding materials	HDPE; LDPE; LLDPE; PP	
Air guide	Internal	
Screw heating	Air heated	
Air temperature control	Open loop	
LQS	No	
Display	No	
Brushless blower motor	No	
Brushless drive motor	No	
LED Working light	No	
Length	450.0 mm	17.71 in
Width	98.0 mm	3.85 in
Height	225.0 mm	8.85 in
Weight	5.9 kg	13.0 lb
Power cable length	3.0-5.0 m	9.84-16.4 ft
Noise emission level	86 dB (A)	
Approvals	CB Certification; CE; KC; UKCA	
Protection class	II	
Country of origin	CH	

Product items

FUSION 2, 230V/2800W, EU plug	119.200
FUSION 2, 230V/2800W, CEE 3/16	139.197
FUSION 2, 120V/2800W, CEE 3/16	150.102
FUSION 2, 220V/2600W, KR plug	166.366
FUSION 2, 230V/2800W, CH plug	176.837



Configure product

FUSION 3C



The FUSION 3C extruder is compact, robust and agile. Thanks to these design elements and its high performance, it easily welds tanks and containers made of PE and PP.

FUSION 3



The FUSION 3 extruder stands out with its slim design and enables convenient, ergonomic welding of PE and PP with high output volume. Well-suited for underground engineering.

Technical data

Voltage	220 V; 230 V	
Frequency	50/60 Hz; 60 Hz	
Power	3000-3200 W	
Welding additive	ø 3-4 mm / 0.12-0.16 in; ø 4-5 mm / 0.16-0.2 in	
Max. material output	3.6 kg/h	7.93 lb/h
Welding materials	HDPE; LDPE; LLDPE; PP	
Air guide	Internal	
Screw heating	Air heated	
Air temperature control	Open loop	
LQS	No	
Display	No	
Brushless blower motor	No	
Brushless drive motor	No	
LED Working light	No	
Length	588.0 mm	23.14 in
Width	98.0 mm	3.85 in
Height	225.0 mm	8.85 in
Weight	6.9 kg	15.21 lb
Power cable length	3.0-5.0 m	9.84-16.4 ft
Noise emission level	86 dB (A)	
Approvals	CB Certification; CE; KC; UKCA	
Protection class	II	
Country of origin	CH	

Product items

FUSION 3C, 230V/3200W, ø3/4mm, EU plug	123.866
FUSION 3C, 230V/3200W, ø3/4mm, CEE 3/16	140.028
FUSION 3C, 230V/3200W, ø4/5mm, CEE 3/16	143.837
FUSION 3C, 230V/3200W, ø4/5mm, EU plug	144.826
FUSION 3C, 220V/3000W, ø3/4mm, KR plug	166.365
FUSION 3C, 230V/3200W, ø3/4mm, w/o shoe, CEE 3/16	173.794
FUSION 3C, 230V/3200W, ø3/4mm, CH plug	176.838



Configure product

Technical data

Voltage	230 V	
Frequency	50/60 Hz	
Power	3500 W	
Welding additive	ø 3-4 mm / 0.12-0.16 in; ø 4-5 mm / 0.16-0.2 in	
Max. material output	3.6 kg/h	7.93 lb/h
Welding materials	HDPE; LDPE; LLDPE; PP	
Air guide	Internal	
Screw heating	Air heated	
Air temperature control	Open loop	
LQS	No	
Display	No	
Brushless blower motor	No	
Brushless drive motor	No	
LED Working light	No	
Length	670.0 mm	26.37 in
Width	90.0 mm	3.54 in
Height	180.0 mm	7.08 in
Weight	7.2 kg	15.87 lb
Power cable length	5.0 m	16.4 ft
Noise emission level	86 dB (A)	
Approvals	CB Certification; CE; UKCA	
Protection class	II	
Country of origin	CH	

Product items

FUSION 3, 230V/3500W, ø3/4mm, EU plug	118.300
FUSION 3, 230V/3500W, ø3/4mm, CEE 3/16	140.020
FUSION 3, 230V/3500W, ø4/5mm, CEE 3/16	143.835
FUSION 3, 230V/3500W, ø4/5mm, EU plug	144.615



Configure product

Welding Machines





LEISTER

UNIPLAN 500



The user-friendly, automatic welder UNIPLAN 500 has even more welding power and advantages than the UNIPLAN 300. It is perfect for welding taped seams, hems and piping on truck tarpaulins, tents and billboards.

UNIPLAN 300



The UNIPLAN 300 automatic welder is ideal for automatic and safe overlap, hem and pipe welding of truck tarpaulins, billboards and tents.

Technical data

Voltage	120 V; 230 V	
Frequency	50/60 Hz	
Power	1800-3450 W	
Speed	1.0-16.0 m/min	3.28-52.49 ft/min
Temperature	100-620 °C	212.0-1148.0 °F
Air volume adjustable	Yes	
Welding nozzle / seam width	20-40 mm	0.78-1.57 in
LQS	No	
Brushless blower motor	Yes	
Brushless drive motor	Yes	
Length	500.0 mm	19.68 in
Width	310.0 mm	12.2 in
Height	300.0 mm	11.81 in
Weight	16.0 kg	35.27 lb
Power cable length	3.0 m	9.84 ft
Approvals	CB Certification; CE; UKCA	
Protection class	I	
Country of origin	CH	

Technical data

Voltage	120 V; 230 V	
Frequency	50/60 Hz	
Power	1800-3450 W	
Speed	1.0-16.0 m/min	3.28-52.49 ft/min
Temperature	100-620 °C	212.0-1148.0 °F
Air volume adjustable	Yes	
Welding nozzle / seam width	20-40 mm	0.78-1.57 in
LQS	No	
Brushless blower motor	No	
Brushless drive motor	Yes	
Length	500.0 mm	19.68 in
Width	310.0 mm	12.2 in
Height	300.0 mm	11.81 in
Weight	15.0 kg	33.06 lb
Power cable length	3.0 m	9.84 ft
Approvals	CB Certification; CE; UKCA	
Protection class	I	
Country of origin	CH	

Product items

UNIPLAN 500, 230V/3450W, 40mm, EU plug	164.548
UNIPLAN 500, 230V/3450W, 30mm, EU plug	164.549
UNIPLAN 500, 230V/3450W, 20mm, EU plug	164.550
UNIPLAN 500, 230V/3450W, 40mm, CEE 3/16	164.554
UNIPLAN 500, 230V/3450W, 30mm, CEE 3/16	164.555
UNIPLAN 500, 230V/3450W, 20mm, CEE 3/16	164.556
UNIPLAN 500, 120V/1800W, 40mm, US plug	164.560
UNIPLAN 500, 120V/1800W, 30mm, US plug	164.561
UNIPLAN 500, 120V/1800W, 20mm, US plug	164.562

Product items

UNIPLAN 300, 230V/3450W, 40mm, EU plug	164.545
UNIPLAN 300, 230V/3450W, 30mm, EU plug	164.546
UNIPLAN 300, 230V/3450W, 20mm, EU plug	164.547
UNIPLAN 300, 230V/3450W, 40mm, CEE 3/16	164.551
UNIPLAN 300, 230V/3450W, 30mm, CEE 3/16	164.552
UNIPLAN 300, 230V/3450W, 20mm, CEE 3/16	164.553
UNIPLAN 300, 120V/1800W, 40mm, US plug	164.557
UNIPLAN 300, 120V/1800W, 30mm, US plug	164.558
UNIPLAN 300, 120V/1800W, 20mm, US plug	164.559



Configure
product



Configure
product



VARIANT T1



The VARIANT T1 high-speed welding machine is designed for overlap, hemming and pipe welding for PVC, PP or PE tarpaulins.

VARIANT T1 Tape



The VARIANT T1 tape welding machine is perfect for welding reinforcement and anti-vandalism tape on truck tarpaulins or banners.

Technical data

Voltage	200 V; 230 V; 400 V	
Frequency	50/60 Hz	
Power	3680-5700 W	
Speed	1.5-18.0 m/min	4.92-59.05 ft/min
Temperature	100-620 °C	212.0-1148.0 °F
Air volume adjustable	Yes	
Welding nozzle / seam width	20-40 mm	0.78-1.57 in
LQS	No	
Brushless blower motor	Yes	
Brushless drive motor	No	
Length	700.0 mm	27.55 in
Width	400.0 mm	15.74 in
Height	230.0 mm	9.05 in
Weight	22.0 kg	48.5 lb
Power cable length	1.2 m	3.93 ft
Approvals	CE; UKCA	
Protection class	I	
Country of origin	CH	

Technical data

Voltage	230 V; 400 V	
Frequency	50/60 Hz	
Power	3680-5700 W	
Speed	1.5-18.0 m/min	4.92-59.05 ft/min
Temperature	100-620 °C	212.0-1148.0 °F
Air volume adjustable	Yes	
Welding nozzle / seam width	25-50 mm	0.98-1.96 in
LQS	No	
Brushless blower motor	Yes	
Brushless drive motor	No	
Length	700.0 mm	27.55 in
Width	400.0 mm	15.74 in
Height	230.0 mm	9.05 in
Weight	28.0 kg	61.72 lb
Power cable length	1.2 m	3.93 ft
Approvals	CE; UKCA	
Protection class	I	
Country of origin	CH	

Product items

VARIANT T1, 230V/3680W, 40mm, EU plug	141.891
VARIANT T1, 230V/3680W, 20mm, EU plug	141.892
VARIANT T1, 400V/5700W, 40mm, CEE 5/16	141.893
VARIANT T1, 400V/5700W, 20mm, CEE 5/16	141.894
VARIANT T1, 200V/4200W, 40mm, w/o plug	147.739
VARIANT T1, 200V/4200W, 20mm, w/o plug	147.748
VARIANT T1, 230V/3680W, 40mm, CEE 3/16	156.145

Product items

VARIANT T1 anti-vandalism tape, 230V/3680W, 25mm, EU plug	148.963
VARIANT T1 Tape, 230V/3680W, 50mm, EU plug	148.964
VARIANT T1 anti-vandalism tape, 400V/5700W, 25mm, CEE 5/16	148.965
VARIANT T1 Tape, 400V/5700W, 50mm, CEE 5/16	148.966



Configure product



Configure product

TAPEMAT



The TAPEMAT automatic welder welds truck tarpaulins and industrial fabrics with PVC straps quickly and securely.

TAPEMAT SPRIEGEL



The TAPEMAT SPRIEGEL welding machine ensures quick and economical reinforcement-tape welding on truck tarpaulins and industrial fabrics.

Technical data

Voltage	400 V	
Frequency	50/60 Hz	
Power	10000 W	
Speed	4.0-20.0 m/min	13.12-65.62 ft/min
Temperature	100-650 °C	212.0-1202.0 °F
Air volume adjustable	No	
Welding nozzle / seam width	50 mm	1.96 in
LQS	No	
Brushless blower motor	Yes	
Brushless drive motor	No	
Length	555.0 mm	21.85 in
Width	435.0 mm	17.12 in
Height	370.0 mm	14.56 in
Weight	35.0 kg	77.16 lb
Power cable length	1.1 m	3.6 ft
Approvals	CB Certification; CE; S+; UKCA	
Protection class	I	
Country of origin	CH	

Technical data

Voltage	400 V	
Frequency	50/60 Hz	
Power	10000 W	
Speed	4.0-20.0 m/min	13.12-65.62 ft/min
Temperature	100-650 °C	212.0-1202.0 °F
Air volume adjustable	No	
Welding nozzle / seam width	100-125 mm	3.93-4.92 in
Weld seam width	2 x 20 mm / 2 x 0.78 in	
LQS	No	
Brushless blower motor	Yes	
Brushless drive motor	No	
Length	555.0 mm	21.85 in
Width	435.0 mm	17.12 in
Height	370.0 mm	14.56 in
Weight	40.0 kg	88.18 lb
Power cable length	1.1 m	3.6 ft
Approvals	CB Certification; CE; S+; UKCA	
Protection class	I	
Country of origin	CH	

Product items

TAPEMAT, 400V/10000W, 50mm, CEE 5/16 129.757

Product items

TAPEMAT SPRIEGEL, 400V/10000W, 125mm (2x20mm), CEE 5/16 133.597
 TAPEMAT SPRIEGEL, 400V/10000W, 100mm (2x20mm), CEE 5/16 138.229



Configure
product



Configure
product

SEAMTEK W-900 AT



With the innovative SEAMTEK W-900 AT welding machine, users weld technical textiles made of PVC, PE, PU and PP in a particularly efficient manner, while saving on energy consumption.

SEAMTEK W-2000 AT



The SEAMTEK W-2000 AT welding machine offers users even more space than SEAMTEK W-900 AT. This enables efficient and safe welding of large products made from technical textiles.

Technical data

Voltage	230-240 V	
Frequency	50/60 Hz	
Power	3900 W	
Speed	0.5-30.0 m/min	1.64-98.43 ft/min
Temperature	0-680 °C	32.0-1256.0 °F
Length	1500.0 mm	59.05 in
Width	702.0 mm	27.63 in
Height	1500.0 mm	59.05 in
Weight	238.0 kg	524.7 lb
Power cable length	2.0 m	6.56 ft
Approvals	CE; UKCA	
Protection class	I	

Technical data

Voltage	230-240 V	
Frequency	50/60 Hz	
Power	3900 W	
Speed	0.5-30.0 m/min	1.64-98.43 ft/min
Temperature	0-680 °C	32.0-1256.0 °F
Length	2650.0 mm	104.33 in
Width	702.0 mm	27.63 in
Height	1500.0 mm	59.05 in
Weight	403.0 kg	888.46 lb
Power cable length	2.0 m	6.56 ft
Approvals	CE; UKCA	
Protection class	I	



Configure
product



Configure
product

SEAMTEK 900 AT



With the low-maintenance SEAMTEK 900 AT welding machine, even inexperienced users succeed in welding perfect taped seams, hems, piping and tape welds. Intuitive operation via touch screen.

SEAMTEK 2000 AT



SEAMTEK 2000 AT offers users even more work space than SEAMTEK 900 AT. This enables efficient and safe welding of large products made from technical textiles.

Technical data

Voltage	230-240 V	
Frequency	50/60 Hz	
Power	4500 W	
Speed	0.1-30.0 m/min	0.32-98.43 ft/min
Temperature	120-700 °C	248.0-1292.0 °F
Air volume adjustable	Yes	
Length	1500.0 mm	59.05 in
Width	702.0 mm	27.63 in
Height	1500.0 mm	59.05 in
Weight	238.0 kg	524.7 lb
Power cable length	2.0 m	6.56 ft
Approvals	CE; UKCA	
Protection class	I	

Technical data

Voltage	230-240 V	
Frequency	50/60 Hz	
Power	4500 W	
Speed	0.1-30.0 m/min	0.32-98.43 ft/min
Temperature	120-700 °C	248.0-1292.0 °F
Air volume adjustable	Yes	
Length	2650.0 mm	104.33 in
Width	702.0 mm	27.63 in
Height	1500.0 mm	59.05 in
Weight	403.0 kg	888.46 lb
Power cable length	2.0 m	6.56 ft
Approvals	CE; UKCA	
Protection class	I	



Configure product



Configure product

HEMTEK ST



The efficient HEMTEK ST welding machine welds hems from start to finish, ideal for smaller and medium-sized banners and tarpaulins made of PVC, PE, PP and other thermoplastics.

Technical data

Voltage	120 V; 230 V	
Frequency	50/60 Hz	
Power	1800-3450 W	
Speed	0.8-12.0 m/min	2.62-39.37 ft/min
Temperature	100-650 °C	212.0-1202.0 °F
Air volume adjustable	Yes	
Welding nozzle / seam width	20-40 mm	0.78-1.57 in
Length	433.0 mm	17.04 in
Width	350.0 mm	13.77 in
Height	600.0 mm	23.62 in
Weight	27.0 kg	59.52 lb
Power cable length	3.0 m	9.84 ft
Approvals	CB Certification; CE; UKCA	
Protection class	I	
Country of origin	CH	

Product items

HEMTEK ST, 230V/3450W, 40mm, EU plug	157.860
HEMTEK ST, 230V/3450W, 30mm, EU plug	157.861
HEMTEK ST, 230V/2350W, 20mm, EU plug	157.862
HEMTEK ST, 230V/3450W, 40mm, CEE 3/16	157.866
HEMTEK ST, 230V/3450W, 30mm, CEE 3/16	157.867
HEMTEK ST, 230V/2350W, 20mm, CEE 3/16	157.868
HEMTEK ST, 120V/1800W, 40mm, US plug	157.869
HEMTEK ST, 120V/1800W, 30mm, US plug	157.870
HEMTEK ST, 120V/1800W, 20mm, US plug	157.871



Configure
product

HEMTEK K-ST



The HEMTEK K-ST welds prefabricated piping quickly and effectively. The easy-to-use and infinitely adjustable guide enables safe piping production with different flag widths.

Technical data

Voltage	120 V; 230 V	
Frequency	50/60 Hz	
Power	1800-2350 W	
Speed	0.8-12.0 m/min	2.62-39.37 ft/min
Temperature	100-650 °C	212.0-1202.0 °F
Air volume adjustable	No	
Welding nozzle / seam width	8 mm	0.31 in
Length	433.0 mm	17.04 in
Width	350.0 mm	13.77 in
Height	600.0 mm	23.62 in
Weight	27.0 kg	59.52 lb
Power cable length	3.0 m	9.84 ft
Approvals	CB Certification; CE; UKCA	
Protection class	I	
Country of origin	CH	

Product items

HEMTEK K-ST, 230V/2350W, 8mm, EU plug	162.499
HEMTEK K-ST, 120V/1800W, 8mm, US plug	162.605



Configure
product



VARIMAT 700



The VARIMAT 700 automatic welding machine offers constant process reliability and tracking accuracy for flat roof welding. High contact pressure, innovative nozzle swivel-in mechanism, LQS and power management ensure welding quality.

VARIMAT 500



The VARIMAT 500 automatic welding machine offers reliability in flat roof welding. High contact pressure, innovative nozzle swivel-in mechanism and variable transport axis ensure welding quality. Convertible from 230 to 400 V.

Technical data

Voltage	230 V; 400 V	
Frequency	50/60 Hz	
Power	3680-5700 W	
Speed	1.0-12.0 m/min	3.28-39.37 ft/min
Temperature	100-620 °C	212.0-1148.0 °F
Air volume adjustable	Yes	
Welding nozzle / seam width	40 mm	1.57 in
Welding materials	ECB; EPDM; EVA; FPO; PIB; PO; PVC; PVC-P; TPE; TPO; TPU	
LQS	Yes	
Brushless blower motor	Yes	
Brushless drive motor	Yes	
Length	605.0 mm	23.81 in
Width	335.0 mm	13.18 in
Height	373.0 mm	14.68 in
Weight	37.5 kg	82.67 lb
Power cable length	5.0 m	16.4 ft
Approvals	CB Certification; CE; UKCA	
Protection class	I	
Country of origin	CH	

Technical data

Voltage	230 V; 400 V	
Frequency	50/60 Hz	
Power	3680-5700 W	
Speed	1.0-12.0 m/min	3.28-39.37 ft/min
Temperature	100-620 °C	212.0-1148.0 °F
Air volume adjustable	Yes	
Welding nozzle / seam width	40 mm	1.57 in
Welding materials	ECB; EPDM; EVA; FPO; PIB; PO; PVC; PVC-P; TPE; TPO; TPU	
LQS	No	
Brushless blower motor	Yes	
Brushless drive motor	Yes	
Length	605.0 mm	23.81 in
Width	335.0 mm	13.18 in
Height	373.0 mm	14.68 in
Weight	37.5 kg	82.67 lb
Power cable length	5.0 m	16.4 ft
Approvals	CB Certification; CE; UKCA	
Protection class	I	
Country of origin	CH	

Product items

VARIMAT 700, 230V/3680W, 40mm, w/o cable	173.180
VARIMAT 700, 400V/5700W, 40mm, CEE 5/16	173.181
VARIMAT 700, 230V/3680W, 40mm, °F, w/o plug	174.614

Product items

VARIMAT 500, 230V/3680W, 40mm, w/o cable	173.182
VARIMAT 500, 400V/5700W, 40mm, CEE 5/16	173.183
VARIMAT 500, 230V/3680W, 40mm, °F, w/o plug	174.615



Configure
product



Configure
product

VARIMAT 300



The VARIMAT 300 roof welding machine enables easy and intuitive welding of flat roofs. High contact pressure, tracking accuracy and flexible transport axis for sustainable welding quality are further plus points.

Technical data

Voltage	230 V; 400 V	
Frequency	50/60 Hz	
Power	3680-5700 W	
Speed	1.0-10.0 m/min	3.28-32.81 ft/min
Temperature	100-620 °C	212.0-1148.0 °F
Air volume adjustable	Yes	
Welding nozzle / seam width	40 mm	1.57 in
Welding materials	ECB; EPDM; EVA; FPO; PIB; PO; PVC; PVC-P; TPE; TPO; TPU	
LQS	No	
Brushless blower motor	No	
Brushless drive motor	Yes	
Length	605.0 mm	23.81 in
Width	335.0 mm	13.18 in
Height	373.0 mm	14.68 in
Weight	37.5 kg	82.67 lb
Power cable length	5.0 m	16.4 ft
Approvals	CB Certification; CE; UKCA	
Protection class	I	
Country of origin	CH	

Product items

VARIMAT 300, 400V/5700W, 40mm, CEE 5/16	173.184
VARIMAT 300, 230V/3680W, 40mm, EU plug	173.185
VARIMAT 300, 230V/3680W, 40mm, CEE 3/16	173.186
VARIMAT 300, 230V/3680W, 40mm, °F, w/o plug	174.616



Configure
product

Flat roof membrane welding



UNIROOF 700



Thanks to LQS, Monitored-Welding-Assistant and Leister's standard nozzle, the UNIROOF 700 automatic roof welding machine is well-suited for welding flat roofs and sets a new standard in the roof industry.

UNIROOF 300



The compact UNIROOF 300 automatic welding machine is ideally suited for welding medium to large flat roofs and is ideal as an entry-level machine due to its simple operation.

Technical data

Voltage	100 V; 120 V; 230 V	
Frequency	50/60 Hz	
Power	1500-3680 W	
Speed	1.0-10.0 m/min	3.28-32.81 ft/min
Temperature	100-620 °C	212.0-1148.0 °F
Air volume adjustable	Yes	
Welding nozzle / seam width	40-80 mm	1.57-3.14 in
Welding materials	Bitumen; ECB; EPDM; EVA; FPO; PIB; PVC; TPE; TPO; TPU	
LQS	Yes	
Brushless blower motor	Yes	
Brushless drive motor	Yes	
Length	475.0 mm	18.7 in
Width	244.0-360.0 mm	9.6-14.17 in
Height	260.0 mm	10.23 in
Weight	17.0-19.9 kg	37.47-43.87 lb
Power cable length	3.0 m	9.84 ft
Approvals	CB Certification; CE; UKCA	
Protection class	I	
Country of origin	CH	

Technical data

Voltage	100 V; 120 V; 230 V	
Frequency	50/60 Hz	
Power	1500-3450 W	
Speed	1.0-10.0 m/min	3.28-32.81 ft/min
Temperature	100-600 °C	212.0-1112.0 °F
Air volume adjustable	Yes	
Welding nozzle / seam width	30-40 mm	1.18-1.57 in
Welding materials	Bitumen; ECB; EPDM; EVA; FPO; PIB; PVC; TPE; TPO; TPU	
LQS	No	
Brushless blower motor	No	
Brushless drive motor	Yes	
Length	475.0 mm	18.7 in
Width	244.0 mm	9.6 in
Height	260.0 mm	10.23 in
Weight	17.0 kg	37.47 lb
Power cable length	3.0 m	9.84 ft
Approvals	CB Certification; CE; UKCA	
Protection class	I	
Country of origin	CH	

Product items

UNIROOF 700, 230V/3680W, 40mm, EU plug	165.834
UNIROOF 700, 120V/1800W, 40mm, US plug	165.835
UNIROOF 700, 230V/3680W, 40mm, w/o plug	165.836
UNIROOF 700, 100V/1500W, 40mm, JP plug	165.837
UNIROOF 700, 230V/3680W, 40mm, CEE 3/16	169.235
UNIROOF 700, 230V/3680W, 40mm, KR plug	169.236
UNIROOF 700, 120V/1800W, 40mm, CEE 3/16	169.237
UNIROOF 700, 230V/3680W, 80mm, EU plug	170.210
UNIROOF 700, 230V/3680W, 40mm, CH plug	176.840

Product items

UNIROOF 300, 230V/3450W, 40mm, EU plug	168.634
UNIROOF 300, 120V/1800W, 40mm, US plug	168.635
UNIROOF 300, 100V/1500W, 40mm, JP plug	168.636
UNIROOF 300, 230V/3450W, 40mm, CEE 3/16	168.637
UNIROOF 300, 230V/3450W, 30mm, EU plug	168.638
UNIROOF 300, 230V/3450W, 40mm, w/o plug	168.639
UNIROOF 300, 230V/3450W, 40mm, CH plug	176.841



Configure
product



Configure
product

UNIDRIVE 500



UNIDRIVE 500 semi-automatic welding machine combines manual and automatic welding in a handy plastic welding device. Developed for small roofs, skylight welding, roof connections and small terraces.

BITUMAT B2



The BITUMAT B2 is used to weld modified bitumen without flames. With the appropriate bitumen nozzle, precisely welded seams are easily achieved.

Technical data

Voltage	100 V; 120 V; 230 V	
Frequency	50/60 Hz	
Power	1500-2300 W	
Speed	0.7-4.5 m/min	2.29-14.76 ft/min
Temperature	100-580 °C	212.0-1076.0 °F
Air volume adjustable	Yes	
Welding nozzle / seam width	15-40 mm	0.59-1.57 in
Welding materials	ECB; EPDM; EVA; FPO; PIB; PO; PU; PVC; TPE; TPO; TPU	
LQS	No	
Display	Yes	
Brushless blower motor	Yes	
Brushless drive motor	Yes	
Reversible drive	Yes	
Length	275.0 mm	10.82 in
Width	173.0 mm	6.81 in
Height	297.0 mm	11.69 in
Weight	4.5 kg	9.92 lb
Power cable length	3.0 m	9.84 ft
Approvals	CB Certification; CE; UKCA	
Protection class	I	
Country of origin	CH	

Product items

UNIDRIVE 500, 230V/2300W, 40mm, EU plug	163.144
UNIDRIVE 500, 230V/2300W, 40mm, CH plug	163.145
UNIDRIVE 500, 230V/2300W, 40mm, CEE 3/16	163.146
UNIDRIVE 500, 120V/1800W, 40mm, US plug	163.147
UNIDRIVE 500, 120V/1800W, 40mm, CEE 3/16	163.148
UNIDRIVE 500, 100V/1500W, 40mm, JP plug	163.149
UNIDRIVE 500, 230V/2300W, 30mm, EU plug	163.150
UNIDRIVE 500, 230V/2300W, 40mm steel rollers, CEE 3/16	163.151
UNIDRIVE 500, 230V/2300W, 15mm steel rollers, CEE 3/16	163.152



Configure product

Technical data

Voltage	230 V; 400 V	
Frequency	50/60 Hz	
Power	6700 W	
Speed	0.8-12.0 m/min	2.62-39.37 ft/min
Temperature	20-650 °C	68.0-1202.0 °F
Air volume adjustable	Yes	
Welding nozzle / seam width	75-100 mm	2.95-3.93 in
Welding materials	Bitumen; ECB	
LQS	No	
Brushless blower motor	No	
Brushless drive motor	No	
Length	690.0 mm	27.16 in
Width	490.0 mm	19.29 in
Height	330.0 mm	12.99 in
Weight	39.0 kg	85.98 lb
Power cable length	1.2 m	3.93 ft
Approvals	CB Certification; CE; UKCA	
Protection class	I	
Country of origin	CH	

Product items

BITUMAT B2, 230V/6700W, 100mm, CEE 5/32	138.386
BITUMAT B2, 400V/6700W, 100mm, CEE 5/16	140.437
BITUMAT B2, 400V/6700W, 75mm, CEE 5/16	140.438
BITUMAT B2, 230V/6700W, 100mm, w/o plug	140.439
BITUMAT B2, 230V/6700W, 75mm, w/o plug	140.441



Configure product

UNIFLOOR 500



The automatic floor welder, UNIFLOOR 500, is suitable for welding resilient floor coverings made of plastic and anti-static ESD floors, as well as natural coverings made of linoleum and rubber.

Technical data

Voltage	100 V; 120 V; 230 V	
Frequency	50/60 Hz	
Power	1500-2300 W	
Speed	0.7-7.5 m/min	2.29-24.6 ft/min
Temperature	100-560 °C	212.0-1040.0 °F
Air volume adjustable	Yes	
Welding materials	CV; LVT; Linoleum; PUR; PVC; Rubber	
LQS	No	
Brushless blower motor	Yes	
Brushless drive motor	Yes	
Length	562.0 mm	22.12 in
Width	289.0 mm	11.37 in
Height	440.0 mm	17.32 in
Weight	15.5 kg	34.17 lb
Power cable length	3.0 m	9.84 ft
Approvals	CB Certification; CE; UKCA	
Protection class	I	
Country of origin	CH	

Product items

UNIFLOOR 500, 230V/2300W, EU plug	169.612
UNIFLOOR 500, 230V/2300W, CEE 3/16	169.613
UNIFLOOR 500, 230V/2300W, CH plug	169.614
UNIFLOOR 500, 120V/1800W, US plug	169.615
UNIFLOOR 500, 120V/1800W, w/o plug	169.616
UNIFLOOR 500, 100V/1500W, JP plug	169.617



**Configure
product**



Floor laying

MINIFLOOR



The MINIFLOOR drive unit is economical and versatile with its ability to transform the TRIAC into a practical, automatic floor welder.

EASYFLOOR



The EASYFLOOR device holder fits all TRIAC models and enables stable device guidance during manual welding. It is a valuable aid in closing joints in PVC, linoleum and rubber flooring.

Technical data

Voltage	110 V; 120 V; 230 V	
Frequency	50/60 Hz	
Power	5 W	
Speed	0.5-4.5 m/min	1.64-14.76 ft/min
Welding materials	CV; LVT; Linoleum; PUR; PVC; Rubber	
LQS	No	
Brushless drive motor	No	
Length	310.0 mm	12.2 in
Width	225.0 mm	8.85 in
Height	245.0 mm	9.64 in
Weight	5.3 kg	11.68 lb
Power cable length	3.0 m	9.84 ft
Approvals	CE; UKCA	
Protection class	I	
Country of origin	CH	

Technical data

Weight	0.37 kg	0.81 lb
--------	---------	---------

Product items

MINIFLOOR drive unit, 230V/5W, EU plug	154.330
MINIFLOOR drive unit, 230V/5W, CH plug	154.334
MINIFLOOR drive unit, 120V/5W, US plug	154.335
MINIFLOOR drive unit, 230V/5W, w/o plug	154.336
MINIFLOOR drive unit, 110V/5W, CEE 3/16	154.337
MINIFLOOR drive unit, 230V/5W, AU plug	154.338
MINIFLOOR drive unit, 230V/5W, UK plug	157.685

Product items

EASYFLOOR	173.478
-----------	---------

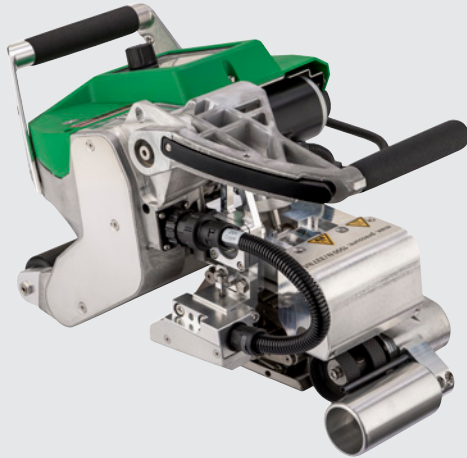


Configure
product



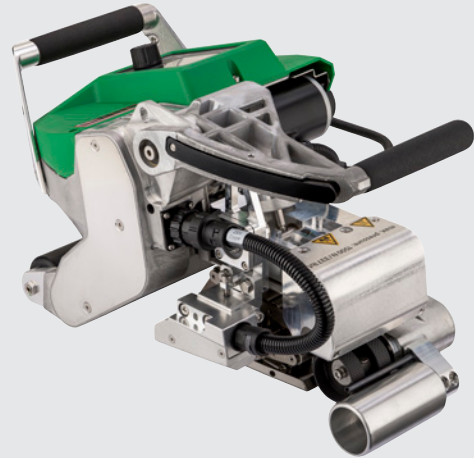
Configure
product

GEOSTAR G7 LQS



The GEOSTAR G7 LQS: A hot-wedge welding machine that reliably welds geosynthetic membranes in underground and landfill engineering. Data is recorded, while welding parameters are monitored via LQS, GPS and Wi-Fi.

GEOSTAR G7



The GEOSTAR G7 hot-wedge welding machine is particularly fast, maintenance-friendly and easy to operate. Optimized for underground engineering, it welds various geomembranes, even on large surfaces, in one step.

Technical data

Voltage	230 V	
Frequency	50/60 Hz	
Power	2800 W	
Speed	0.8-12.0 m/min	2.62-39.37 ft/min
Temperature	80-460 °C	176.0-860.0 °F
Hot wedge length	130 mm	5.11 in
Hot wedge material	Copper	
Max. welding pressure	1500 N	337.21 lbf
Max. overlap	150 mm	5.9 in
Welding materials	FPO; HDPE; LDPE; LLDPE; PE; PP; TPO	
Weldable material thicknesses	1.0-3.0 mm	39.37-118.11 mil
LQS	Yes	
Length	482.0 mm	18.97 in
Width	278.0 mm	10.94 in
Height	269.0 mm	10.59 in
Weight	18.1 kg	39.9 lb
Approvals	CB Certification; CE; UKCA	
Protection class	I	
Country of origin	CH	

Technical data

Voltage	230 V	
Frequency	50/60 Hz	
Power	2800 W	
Speed	0.8-12.0 m/min	2.62-39.37 ft/min
Temperature	80-460 °C	176.0-860.0 °F
Hot wedge length	130 mm	5.11 in
Hot wedge material	Copper	
Max. welding pressure	1500 N	337.21 lbf
Max. overlap	150 mm	5.9 in
Welding materials	FPO; HDPE; LDPE; LLDPE; PE; PP; TPO	
Weldable material thicknesses	1.0-3.0 mm	39.37-118.11 mil
LQS	No	
Length	482.0 mm	18.97 in
Width	278.0 mm	10.94 in
Height	269.0 mm	10.59 in
Weight	18.1 kg	39.9 lb
Approvals	CB Certification; CE; UKCA	
Protection class	I	
Country of origin	CH	

Product items

GEOSTAR G7 LQS, 230V/2800W, copper test channel, EU plug 155.152

Product items

GEOSTAR G7, 230V/2800W, copper test channel, EU plug 151.035
 GEOSTAR G7, 230V/2800W, copper test channel, UK plug 156.310

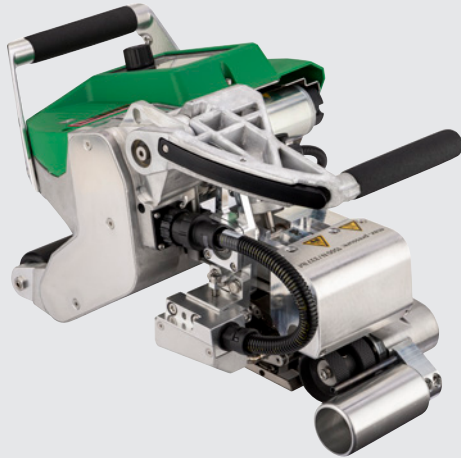


Configure
product



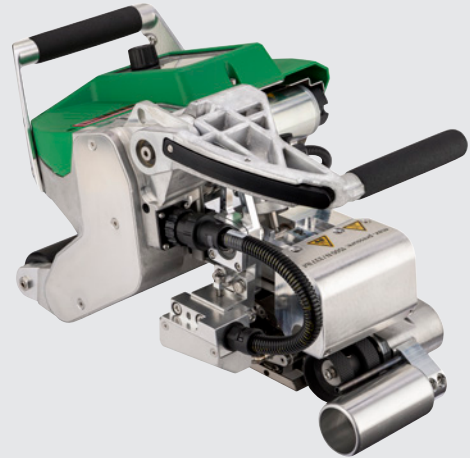
Configure
product

GEOSTAR G5 LQS



The GEOSTAR G5 LQS hot-wedge welding machine documents the quality of the welding on landfills and in mines. All welding parameters remain under control when welding geomembranes.

GEOSTAR G5



The fast GEOSTAR G5 automatic welding machine welds geomembranes in underground engineering, e.g. in mines and landfills. Its sophisticated design allows easy maintenance, cleaning and conversion.

Technical data

Voltage	230 V	
Frequency	50/60 Hz	
Power	2800 W	
Speed	0.8-12.0 m/min	2.62-39.37 ft/min
Temperature	80-460 °C	176.0-860.0 °F
Hot wedge length	90 mm	3.54 in
Hot wedge material	Copper	
Max. welding pressure	1500 N	337.21 lbf
Max. overlap	150 mm	5.9 in
Welding materials	FPO; HDPE; LDPE; LLDPE; PE; PP; TPO	
Weldable material thicknesses	0.8-3.0 mm	31.49-118.11 mil
LQS	Yes	
Length	482.0 mm	18.97 in
Width	278.0 mm	10.94 in
Height	269.0 mm	10.59 in
Weight	16.8 kg	37.03 lb
Approvals	CB Certification; CE; UKCA	
Protection class	I	
Country of origin	CH	

Product items

GEOSTAR G5 LQS, 230V/2800W, copper test channel, EU plug 156.135

Technical data

Voltage	230 V	
Frequency	50/60 Hz	
Power	2800 W	
Speed	0.8-12.0 m/min	2.62-39.37 ft/min
Temperature	80-460 °C	176.0-860.0 °F
Hot wedge length	90 mm	3.54 in
Hot wedge material	Copper	
Max. welding pressure	1500 N	337.21 lbf
Max. overlap	150 mm	5.9 in
Welding materials	FPO; HDPE; LDPE; LLDPE; PE; PP; TPO	
Weldable material thicknesses	0.8-3.0 mm	31.49-118.11 mil
LQS	No	
Length	482.0 mm	18.97 in
Width	278.0 mm	10.94 in
Height	269.0 mm	10.59 in
Weight	16.8 kg	37.03 lb
Approvals	CB Certification; CE; UKCA	
Protection class	I	
Country of origin	CH	

Product items

GEOSTAR G5, 230V/2800W, copper test channel, EU plug 151.683
 GEOSTAR G5, 230V/2800W, copper test channel, UK plug 156.311



Configure product



Configure product

COMET 700



The geo-welding machine, COMET 700, is equipped with Wi-Fi, GPS and the Leister-Quality-System (LQS) for quality documentation. It welds thick and thin geo-membranes reliably and efficiently to deliver ultimate user-satisfaction.

COMET 500



The COMET 500 hot-wedge welding machine is compact and easy to transport. It is particularly suitable for welding of thick and thin geomembranes made of PE, HDPE and LDPE in civil engineering.

Technical data

Voltage	120 V; 230 V	
Frequency	50/60 Hz	
Power	1700-2300 W	
Speed	0.8-8.0 m/min	2.62-26.24 ft/min
Temperature	80-460 °C	176.0-860.0 °F
Hot wedge length	60-90 mm 2.36-3.54 in	
Hot wedge material	Copper; Stainless steel	
Max. welding pressure	1000 N	224.8 lbf
Max. overlap	125 mm	4.92 in
Welding materials	CSPE; FPO; HDPE; LDPE; LLDPE; PE; PP; PVC; TPO	
Weldable material thicknesses	0.5-3.0 mm	19.68-118.11 mil
LQS	Yes	
Length	325.0 mm	12.79 in
Width	245.0 mm	9.64 in
Height	260.0 mm	10.23 in
Weight	9.4 kg	20.72 lb
Approvals	CE	
Protection class	I	
Country of origin	CH	

Technical data

Voltage	230 V	
Frequency	50/60 Hz	
Power	2300 W	
Speed	0.8-8.0 m/min	2.62-26.24 ft/min
Temperature	80-460 °C	176.0-860.0 °F
Hot wedge length	60 mm 2.36 in	
Hot wedge material	Copper; Stainless steel	
Max. welding pressure	1000 N	224.8 lbf
Max. overlap	125 mm	4.92 in
Welding materials	CSPE; FPO; HDPE; LDPE; LLDPE; PE; PP; PVC; TPO	
Weldable material thicknesses	0.5-3.0 mm	19.68-118.11 mil
LQS	No	
Length	325.0 mm	12.79 in
Width	245.0 mm	9.64 in
Height	260.0 mm	10.23 in
Weight	9.2 kg	20.28 lb
Approvals	CE	
Protection class	I	
Country of origin	CH	

Product items

COMET 700, 120V/1700W, copper 60x50mm test channel, CEE 3/16	168.248
COMET 700, 230V/2300W, copper 90x50mm test channel, EU plug	168.644
COMET 700, 230V/2300W, copper 60x50mm test channel, EU plug	168.648
COMET 700, 230V/2300W, steel 60x50mm test channel, EU plug	168.649
COMET 700, 230V/2300W, steel 60x50mm, EU plug	168.651
COMET 700, 120V/1700W, steel 60x50mm, CEE 3/16	168.653
COMET 700, 230V/2300W, copper 90x50mm test channel, CEE 3/16	168.656
COMET 700, 230V/2300W, steel 90x50mm, CEE 3/16	168.660
COMET 700, 230V/2300W, copper 90x45mm test channel, CEE 3/16	168.661
COMET 700, 230V/2300W, copper 60x50mm test channel, CEE 3/16	168.662
COMET 700, 230V/2300W, steel 60x50mm test channel, CEE 3/16	168.663
COMET 700, 230V/2300W, steel 60x50mm, CEE 3/16	168.665
COMET 700, 230V/2300W, copper 60x45mm test channel, CEE 3/16	168.666



Configure product

Product items

COMET 500, 230V/2300W, copper 60x50mm test channel, CEE 3/16	170.562
COMET 500, 230V/2300W, steel 60x50mm test channel, CEE 3/16	170.563
COMET 500, 230V/2300W, copper 60x50mm, CEE 3/16	170.564
COMET 500, 230V/2300W, steel 60x50mm, CEE 3/16	170.565
COMET 500, 230V/2300W, copper 60x45mm test channel, CEE 3/16	170.566



Configure product

COMET



The COMET hot-wedge welding machine is compact and easy to transport. It is used in tunnel construction for overhead welding and vertical sealing.

Technical data

Voltage	230 V	
Frequency	50/60 Hz	
Power	1200-1500 W	
Speed	0.8-3.2 m/min	2.62-10.49 ft/min
Temperature	80-420 °C	176.0-788.0 °F
Hot wedge length	50-70 mm 1.96-2.75 in	
Hot wedge material	Copper; Stainless steel	
Max. welding pressure	1000 N	224.8 lbf
Max. overlap	125 mm	4.92 in
Welding materials	CSPE; FPO; HDPE; LDPE; LLDPE; PE; PP; PVC; TPO	
Weldable material thicknesses	1.0-3.0 mm	39.37-118.11 mil
LOS	No	
Length	295.0 mm	11.61 in
Width	250.0 mm	9.84 in
Height	245.0 mm	9.64 in
Weight	7.5 kg	16.53 lb
Approvals	CE; UKCA	
Protection class	I	
Country of origin	CH	

Product items

COMET, 230V/2500W, copper 70mm test channel, EU plug	107.538
COMET, 230V/1200W, steel 50mm test channel, EU plug	107.558



Configure
product

Landfill and mining
membrane welding



TWINNY T7



The TWINNY T7 automatic welder with combi-wedge is the new edition to the well-rounded TWINNY T and is ideal for welding thick and thin geomembranes on rough/uneven subsurfaces.

TWINNY T5



The TWINNY T5 automatic welder makes plastic welding easy and practical, whether it's welding thick or thin geomembranes in underground engineering, swimming pool construction, mine construction, landfill engineering or fish farm tanks.

Technical data

Voltage	230 V	
Frequency	50/60 Hz	
Power	3450 W	
Speed	0.8-8.0 m/min	2.62-26.24 ft/min
Temperature	100-560 °C	212.0-1040.0 °F
Max. welding pressure	1000 N	224.8 lbf
Max. overlap	125 mm	4.92 in
Welding materials	CSPE; EPDM; FPO; HDPE; LDPE; LLDPE; PP; PVC; TPO	
Weldable material thicknesses	0.3-3.0 mm	11.81-118.11 mil
LQS	Yes	
Brushless blower motor	Yes	
Length	350.0 mm	13.77 in
Width	360.0 mm	14.17 in
Height	260.0 mm	10.23 in
Weight	10.5 kg	23.14 lb
Approvals	CE; UKCA	
Protection class	I	
Country of origin	CH	

Technical data

Voltage	120-230 V	
Frequency	50/60 Hz	
Power	1800-3450 W	
Speed	0.8-8.0 m/min	2.62-26.24 ft/min
Temperature	100-560 °C	212.0-1040.0 °F
Max. welding pressure	1000 N	224.8 lbf
Max. overlap	125 mm	4.92 in
Welding materials	CSPE; EPDM; FPO; HDPE; LDPE; LLDPE; PP; PVC; TPO	
Weldable material thicknesses	0.3-3.0 mm	11.81-118.11 mil
LQS	No	
Brushless blower motor	No	
Length	350.0 mm	13.77 in
Width	360.0 mm	14.17 in
Height	260.0 mm	10.23 in
Weight	9.9 kg	21.82 lb
Approvals	CE; UKCA	
Protection class	I	
Country of origin	CH	

Product items

TWINNY T7, 230V/3450W, combi-wedge long test channel, EU plug	164.197
TWINNY T7, 230V/3450W, combi-wedge long test channel, CEE 3/16	164.198
TWINNY T7, 230V/3450W, combi-wedge short test channel, EU plug	164.214
TWINNY T7, 230V/3450W, combi-wedge short test channel, CEE 3/16	164.215
TWINNY T7, 230V/3450W, combi-wedge long, EU plug	164.216
TWINNY T7, 230V/3450W, combi-wedge long, CEE 3/16	164.217
TWINNY T7, 230V/3450W, combi-wedge short, EU plug	164.218
TWINNY T7, 230V/3450W, combi-wedge short, CEE 3/16	164.219
TWINNY T7, 230V/3450W, combi-wedge short, silicone, EU plug	164.220
TWINNY T7, 230V/3450W, combi-wedge short, silicone, CEE 3/16	164.221

Product items

TWINNY T5, 230V/3450W, combi-wedge long test channel, EU plug	164.222
TWINNY T5, 230V/3450W, combi-wedge long test channel, CEE 3/16	164.223
TWINNY T5, 230V/3450W, combi-wedge short test channel, EU plug	164.224
TWINNY T5, 230V/3450W, combi-wedge short test channel, CEE 3/16	164.225
TWINNY T5, 230V/3450W, combi-wedge long, EU plug	164.226
TWINNY T5, 230V/3450W, combi-wedge long, CEE 3/16	164.227
TWINNY T5, 230V/3450W, combi-wedge short, EU plug	164.228
TWINNY T5, 230V/3450W, combi-wedge short, CEE 3/16	164.229
TWINNY T5, 230V/3450W, combi-wedge short, silicone, EU plug	164.230
TWINNY T5, 230V/3450W, combi-wedge short, silicone, CEE 3/16	164.231
TWINNY T5, 120V/1800W, combi-wedge short test channel, CEE 3/16	164.232
TWINNY T5, 120V/1800W, combi-wedge short, CEE 3/16	164.233



Configure product



Configure product

TWINNY S



The welding machine TWINNY S with combination wedge is designed in particular for overhead welding in tunnel construction. In the process, it welds thin geomembranes made of PVC, HDPE and LDPE very reliably and safe.

Technical data

Voltage	120-230 V	
Frequency	50/60 Hz	
Power	1900-2900 W	
Speed	0.2-4.0 m/min	0.65-13.12 ft/min
Temperature	20-600 °C	68.0-1112.0 °F
Max. welding pressure	1000 N	224.8 lbf
Max. overlap	125 mm	4.92 in
Welding materials	CSPE; EPDM; FPO; HDPE; LDPE; LLDPE; PP; PVC; TPO	
Weldable material thicknesses	0.3-3.0 mm	11.81-118.11 mil
LQS	No	
Brushless blower motor	No	
Length	350.0 mm	13.77 in
Width	390.0 mm	15.35 in
Height	270.0 mm	10.62 in
Weight	6.9 kg	15.21 lb
Approvals	CE; UKCA	
Protection class	II	
Country of origin	CH	

Product items

TWINNY S, 120V/1900W, combi-wedge short, 144:1, UK plug	119.016
TWINNY S, 230V/2900W, combi-wedge short, 144:1, EU plug	119.024
TWINNY S, 230V/2900W, combi-wedge long, 256:1, EU plug	119.031
TWINNY S, 120V/1900W, combi-wedge long, 256:1, w/o plug	119.039
TWINNY S, 230V/2900W, combi-wedge long, 256:1, CEE 3/16	128.778

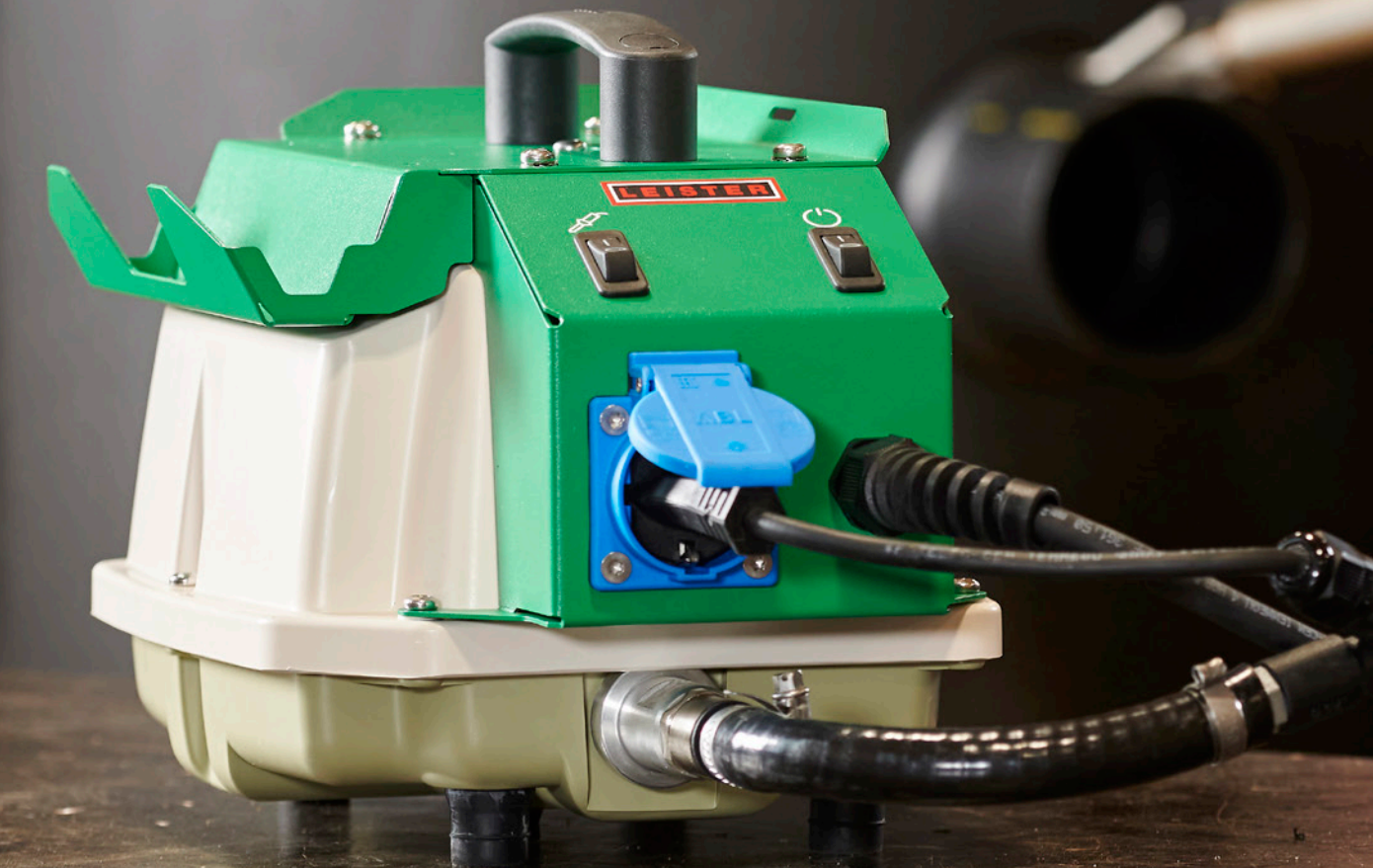


**Configure
product**



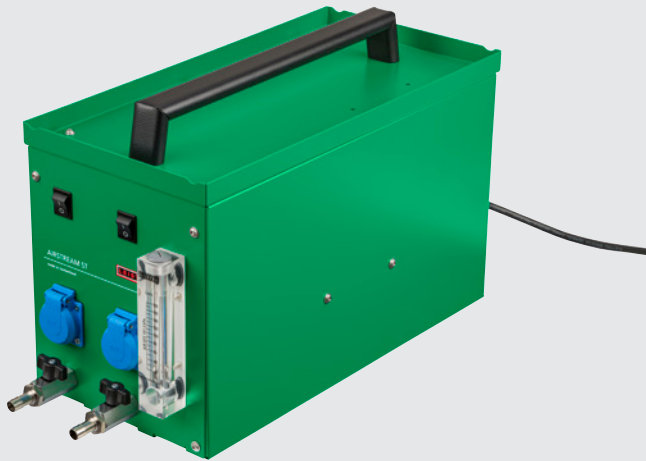
Tunnel waterproofing

Blowers





AIRSTREAM ST



With the quiet and efficient AIRSTREAM ST linear piston compressor, the air volume can be adjusted using the flow meter. It is ideal for welding applications with the highest cleanliness and quality requirements.

AIRSTREAM 100



The mobile AIRSTREAM 100 blower supplies the right amount of air for Leister's DIODE, PENWELD and LABOR heat guns. A suitable adapter is included in the scope of delivery to easily connect the heat guns.

Technical data

Voltage	230 V	
Frequency	50 Hz	
Power	215 W	
Airflow (20°C)	200 l/min	7.06 cfm
Static pressure	25000 Pa	3.62 psi
Ambient temperature	-10-40 °C 14.0-104.0 °F	
Air outlet (outer diameter)	14.5 mm	0.57 in
Blower type	Linear piston compressor	
Length	600.0 mm	23.62 in
Width	250.0 mm	9.84 in
Height	362.0 mm	14.25 in
Weight	24.0 kg	52.91 lb
Power cable length	3.0 m	9.84 ft
Noise emission level	< 48 dB(A)	
Approvals	CE; UKCA	
Protection class	I	
Country of origin	CH	

Technical data

Voltage	230 V	
Frequency	50 Hz	
Power	72 W	
Airflow (20°C)	80 l/min	2.82 cfm
Static pressure	15000 Pa	2.17 psi
Ambient temperature	-10-40 °C 14.0-104.0 °F	
Air outlet (outer diameter)	14.5 mm	0.57 in
Blower type	Linear piston compressor	
Length	440.0 mm	17.32 in
Width	228.0 mm	8.97 in
Height	227.0 mm	8.93 in
Weight	7.2 kg	15.87 lb
Power cable length	3.0 m	9.84 ft
Noise emission level	< 48 dB(A)	
Approvals	CE; UKCA	
Protection class	I	
Country of origin	CH	

Product items

AIRSTREAM ST, 230V/215W, EU plug	158.822
AIRSTREAM ST, 230V/215W, CH plug	161.052

Product items

AIRSTREAM 100, 230V/72W, CH plug	171.350
AIRSTREAM 100, 230V/72W, EU plug	171.351



Configure
product



Configure
product

MINOR



The small and light MINOR air compressor is the perfect air source for Leister manual welding devices like DIODE S and LABOR S.

ROBUST



The ROBUST blower is built in a very compact design, and is quiet and versatile. It is suitable for installation in industrial production facilities and is durable, even in extreme operating conditions and in continuous use.

Technical data

Voltage	120 V; 230 V	
Frequency	50/60 Hz	
Power	100 W	
Airflow (20°C)	400 l/min	14.12 cfm
Static pressure	4000 Pa	0.58 psi
Max. ambient temperature	60 °C	140 °F
Air outlet (outer diameter)	14.5 mm	0.57 in
Blower type	Radial blower	
Length	250.0 mm	9.84 in
Device diameter	95 mm	3.74 in
Handle diameter	64 mm	2.51 in
Weight	1.15 kg	2.53 lb
Power cable length	3.0 m	9.84 ft
Noise emission level	67 dB (A)	
Approvals	CB Certification; CE; UKCA	
Protection class	II	
Country of origin	CH	

Product items

MINOR, 230V/100W, EU plug	108.747
MINOR, 120V/100W, US plug	108.749
MINOR, 120V/100W, CEE 3/16	109.988
MINOR, 230V/100W, CN plug	177.271



Configure product

Technical data

Blower type	Side channel blower	
Phases	1x; 3x	
Frequency	50 Hz; 50/60 Hz	
Airflow (20 °C) at 50 Hz	1200 l/min	42.37 cfm
Airflow (20 °C) at 60 Hz	1300 l/min	45.9 cfm
Static pressure at 50 Hz	8000 Pa	1.16 psi
Static pressure at 60 Hz	10500 Pa	1.52 psi
Max. air inlet temperature	60 °C	140 °F
Max. ambient temperature	60 °C	140 °F
Noise emission level	62 dB (A)	
Air inlet (outer diameter)	38 mm	1.49 in
Air outlet (outer diameter)	38.0 mm	1.49 in
Length	257.0 mm	10.11 in
Width	227.0 mm	8.93 in
Height	221.0 mm	8.7 in
Weight	8.0 kg	17.63 lb
Approvals	CE; UKCA	
Protection class (IEC 60529)	IP54	
Protection class	I	

Product items

ROBUST, 3 x 230/400V 50Hz, 3 x 265/460V 60Hz	103.429
ROBUST, 1 x 230V/250W, EU plug	103.432
ROBUST, 1 x 110V/250W, 50Hz	103.434



Configure product

Grooving Devices





GROOVER 500-LP



The GROOVER 500-LP battery-operated grooving machine mills grooves for welding seams when laying resilient plastic and natural floor coverings such as linoleum and rubber. It's cordless, uses a general-purpose milling cutter and works quickly.

Technical data

Voltage battery	18 V	
Battery capacity	90 Wh	
Voltage	120 V; 230 V	
Power	90 W	
Milling blade type	Tungsten carbide parabolic - 12 teeth	
Milling blade diameter	130 mm	5.11 in
Milling depth	0.0-6.0 mm	0.0-0.23 in
Joint width	3.5 mm	0.13 in
Brushless drive motor	Yes	
Length	445.0 mm	17.51 in
Width	212.0 mm	8.34 in
Height	336.0 mm	13.22 in
Weight	5.5 kg	12.12 lb
Approvals	CB Certification; CE; UKCA	
Country of origin	CN	

Product items

GROOVER 500-LP, 18.0V/5.0Ah, EU/CH plug	167.451
GROOVER 500-LP, 18.0V/5.0Ah, US plug	168.171



Configure product

GROOVER



The electric GROOVER cuts welding seams evenly in resilient floor coverings made of Vinyl (PVC), PE and linoleum.

Technical data

Voltage	120 V; 230 V	
Frequency	50/60 Hz	
Power	350-700 W	
Milling blade type	Tungsten carbide round - 10 teeth; Tungsten carbide trapezoidal - 10 teeth	
Milling blade diameter	110 mm	4.33 in
Milling depth	0.0-4.0 mm	0.0-0.15 in
Joint width	3.5 mm	0.13 in
Brushless drive motor	No	
Length	240.0 mm	9.44 in
Width	205.0 mm	8.07 in
Height	255.0 mm	10.03 in
Weight	6.7 kg	14.77 lb
Approvals	CE; S+; UKCA	
Protection class	II	
Country of origin	CH	

Product items

GROOVER, 230V/700W, trapezoidal, EU plug	108.393
GROOVER, 120V/700W, trapezoidal, US plug	108.395
GROOVER, 120V/700W, trapezoidal, UK plug	108.397
GROOVER, 230V/700W, round, EU plug	111.032
GROOVER, 230V/700W, trapezoidal, UK plug	112.238



Configure product

GROOVY



The GROOVY grooving tool is the lightweight, easy to use and handy flooring tool used to prepare the welding joints in resilient flooring made from PVC and linoleum.

Technical data

Milling depth	0.5-2.5 mm	0.01-0.09 in
Joint width	3.5 mm	0.13 in
Length	180.0 mm	7.08 in
Width	42.0 mm	1.65 in
Height	92.0 mm	3.62 in
Weight	0.29 kg	0.63 lb

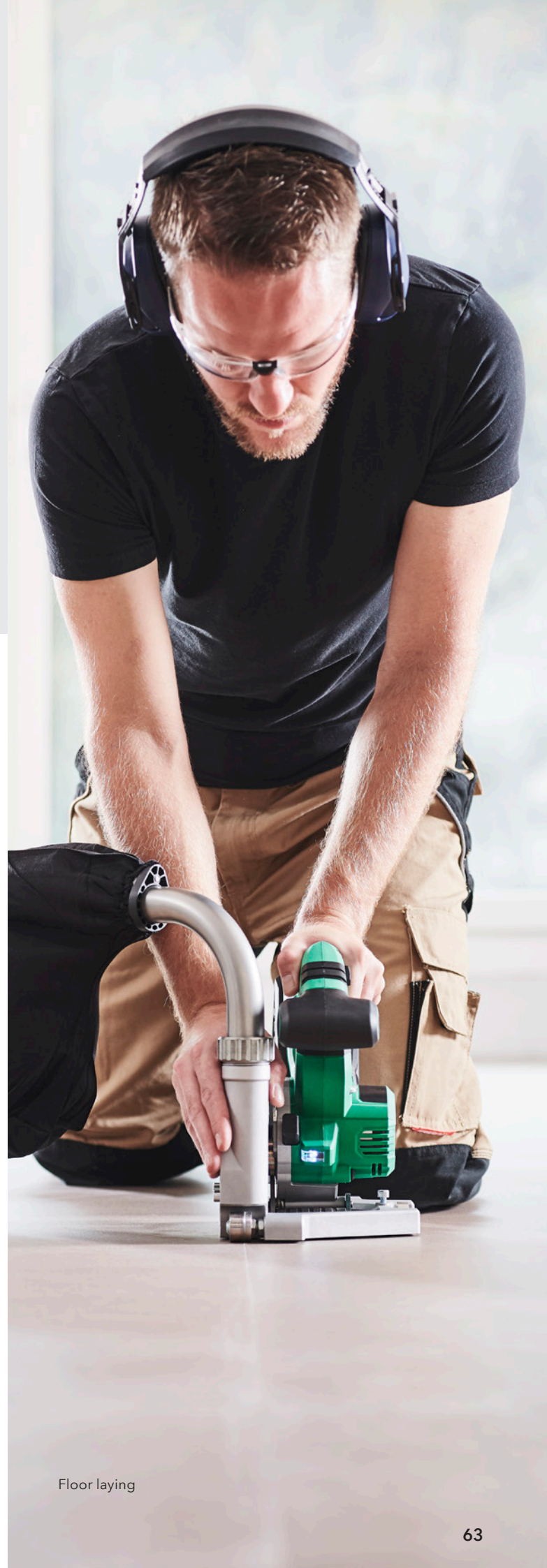
Product items

GROOVY

150.809



Configure
product



Floor laying

Testing Instruments



EXAMO 600F USB



The EXAMO 600F USB is the ideal testing device to check the weld seam of highly elastic membranes with regard to their peel adhesion, tensile strength and shear strength. Tested and proven worldwide.

EXAMO 300F USB



The EXAMO 300F USB is the ideal testing device to check welded membrane seams for peel adhesion, tensile strength and shear strength - tested and proven worldwide.

Technical data

Voltage	100 V; 120 V; 230 V	
Power	200 W	
Tensile force	4000 N	899.23 lbf
Max. test length	600 mm	23.62 in
Max. sample width	40 mm	1.57 in
Max. sample thickness	4.0 mm	0.15 in
Crosshead speed	20-550 mm/min	0.78-21.65 in/min
Length	1050.0 mm	41.33 in
Width	270.0 mm	10.62 in
Height	190.0 mm	7.48 in
Weight	17.5 kg	38.58 lb
Approvals	CE; UKCA	
Protection class	I	
Country of origin	CH	

Technical data

Voltage	100 V; 120 V; 230 V	
Power	200 W	
Tensile force	4000 N	899.23 lbf
Max. test length	300 mm	11.81 in
Max. sample width	40 mm	1.57 in
Max. sample thickness	4.0 mm	0.15 in
Crosshead speed	20-550 mm/min	0.78-21.65 in/min
Length	750.0 mm	29.52 in
Width	270.0 mm	10.62 in
Height	190.0 mm	7.48 in
Weight	14.0 kg	30.86 lb
Approvals	CE; UKCA	
Protection class	I	
Country of origin	CH	

Product items

EXAMO 600F USB, 230V/200W, EU plug	139.060
EXAMO 600F USB, 120V/200W, w/o plug	139.063
EXAMO 600F USB, 100V/200W, w/o plug	139.065
EXAMO 600F USB, 230V/200W, UK plug	156.309

Product items

EXAMO 300F USB, 230V/200W, EU plug	139.059
EXAMO 300F USB, 120V/200W, w/o plug	139.062
EXAMO 300F USB, 100V/200W, w/o plug	139.064
EXAMO 300F USB, 230V/200W, UK plug	156.308



Configure
product



Configure
product

EXAMO 100



The EXAMO 100 tensile tester tests the weld seam quality of geomembranes. Advantages: tool-free clamping of the specimens, constant tensile speed as well as effortless pulling of the specimens with the cordless screwdriver.

Technical data

Max. test length	100 mm	3.93 in
Max. sample width	25 mm	0.98 in
Max. sample thickness	3.0 mm	0.11 in
Length	283.0 mm	11.14 in
Width	50.0 mm	1.96 in
Height	73.0 mm	2.87 in
Weight	1.4 kg	3.08 lb
Approvals	CE; UKCA	
Country of origin	CH	

Product items

EXAMO 100

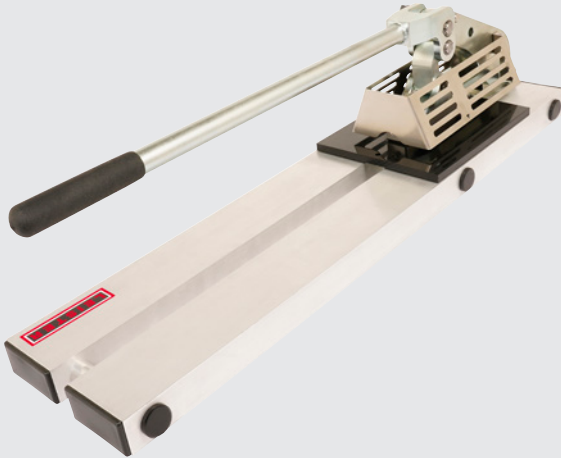
170.539



Configure
product



COUPON CUTTER 500



The COUPON CUTTER 500 is ideal for punching test strips. As preparation for tensile testing of geomembrane weld seams, this indestructible, manual tool is essential for every landfill and tunnel construction site.

Technical data

Sample width	15-25 mm	0.59-0.98 in
Sample length	150 mm	5.9 in
Max. sample thickness	3.0 mm	0.11 in
Weight	15.0 kg	33.06 lb
Country of origin	CH	

Product items

COUPON CUTTER 500	161.540
-------------------	---------



Configure product

Leak tester



The Leak tester is a reliable compressed air testing device for checking the tightness of overlap seams with test channel. Developed for quality assurance of weld seams in civil engineering, tunnels and landfill sites.

Technical data

Pressure	0-6 bar	0.0-87.02 psi
Manometer scale	bar, psi; psi, kPa	
Length	250.0 mm	9.84 in
Weight	0.575 kg	1.26 lb
Approvals	CE; UKCA	
Country of origin	CH	

Product items

Leak tester, 0-6bar, straight needle	142.475
Leak tester, 0-6bar, tapered needle	150.720
Leak tester, 0-60psi, tapered needle	158.374



Configure product



VACUUM PLATE 300



The VACUUM PLATE 300 enables leak detection in geomembranes and roofing membranes in their respective applications. Thanks to its flexibility, it easily adapts to uneven surfaces.

VACUUM BOX



With the VACUUM BOX, plastic welding seams are easily checked to ensure they are leak-proof. It consists of transparent, impact-resistant plastic, has a durable seal and is ideal for geo applications.

Technical data

Voltage	120 V; 230 V	
Frequency	50/60 Hz	
Power	1100 W	
Max. vacuum	0.17 bar	2.46 psi
Manometer scale	bar, inHg	
Length	750.0 mm	29.52 in
Width	250.0 mm	9.84 in
Height	200.0 mm	7.87 in
Weight	7.7 kg	16.97 lb
Approvals	CE	
Protection class	II	
Country of origin	CH	

Technical data

Max. vacuum	0.5 bar	7.25 psi
Manometer scale	bar, inHg	
Length	830.0 mm	32.67 in
Width	320.0 mm	12.59 in
Height	150.0 mm	5.9 in
Weight	3.8 kg	8.37 lb
Country of origin	CH	

Product items

VACUUM PLATE 300, 120V/1100W, US plug	169.579
VACUUM PLATE 300, 230V/1100W, EU plug	169.580
VACUUM PLATE 300, 230V/1100W, CEE 3/16	172.402

Product items

VACUUM BOX, 830x320mm	152.981
-----------------------	---------



Configure
product



Configure
product

VACUUM BELL



VACUUM BELL is a practical, plastic vacuum bell. It is especially used in landfill engineering and tunnel construction to ensure overlap welding seams are leak-proof.

VACUUM PUMP



When paired with the BOX or BELL, the convenient VACUUM PUMP creates the necessary vacuum to optimize the quality testing process.

Technical data

Max. vacuum	0.5 bar	7.25 psi
Manometer scale	bar, inHg	
Length	320.0 mm	12.59 in
Width	320.0 mm	12.59 in
Height	150.0 mm	5.9 in
Weight	1.5 kg	3.3 lb
Country of origin	CH	

Technical data

Voltage	120 V; 230 V	
Frequency	50/60 Hz	
Power	340 W	
Max. vacuum	0.5 bar	7.25 psi
Length	545.0 mm	21.45 in
Width	195.0 mm	7.67 in
Height	142.0 mm	5.59 in
Weight	9.9 kg	21.82 lb
Approvals	CE	
Protection class	I	
Country of origin	CH	

Product items

VACUUM BELL, 320x320mm	153.026
------------------------	---------

Product items

VACUUM PUMP, 230V/340W, EU plug	153.024
VACUUM PUMP, 120V/340W, w/o plug	153.025



Configure product



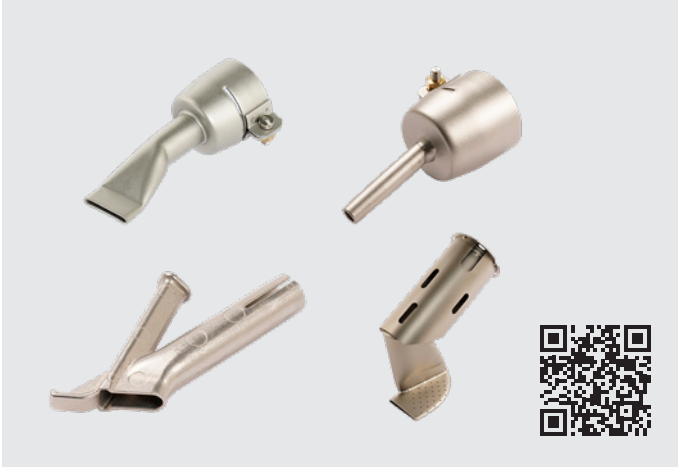
Configure product

Accessories





Nozzles



Pressure rollers



Cutting tools



Brushes



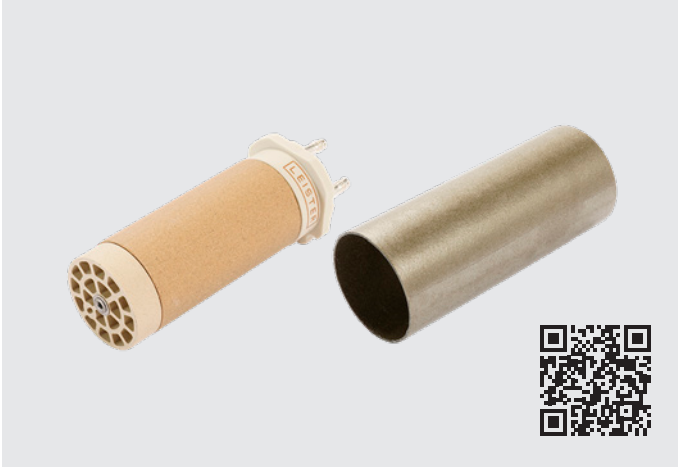
Welding seam processing



Testing Instruments



Heating elements



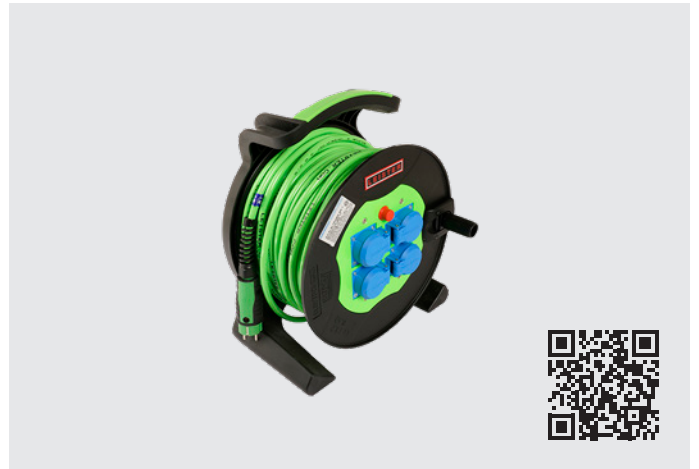
Soldering iron kit



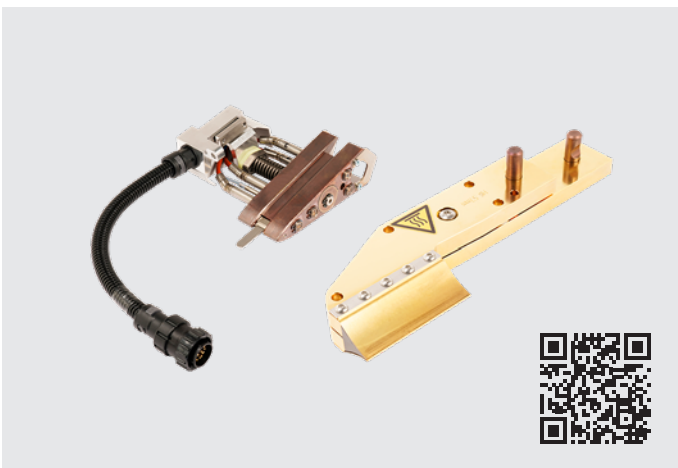
Heat protection



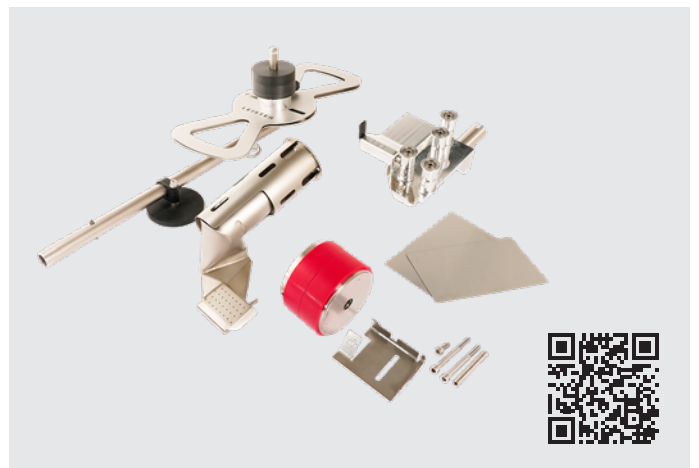
Extension cable



Hot wedges



Conversion kits



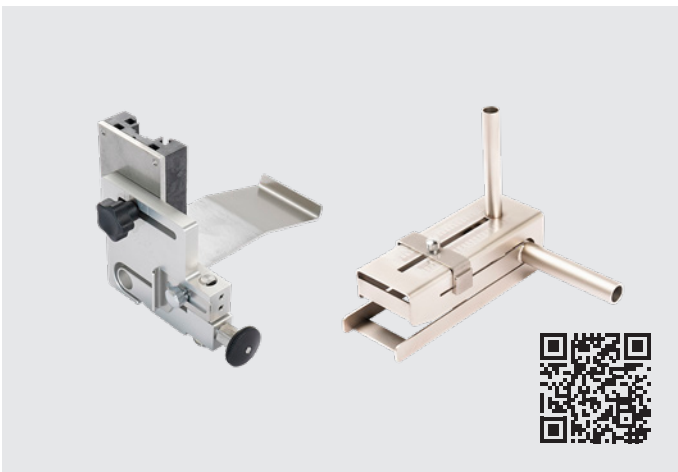
Welding shoes



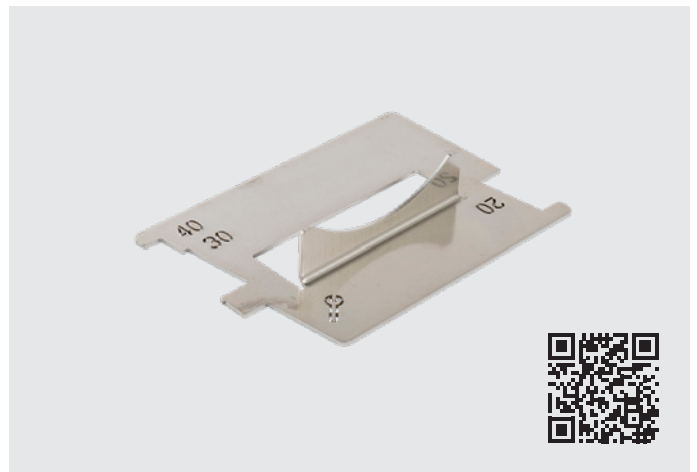
Welding rods



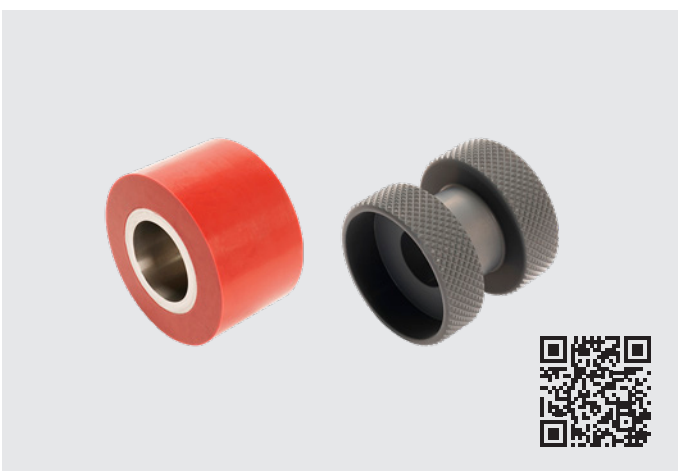
Guidance



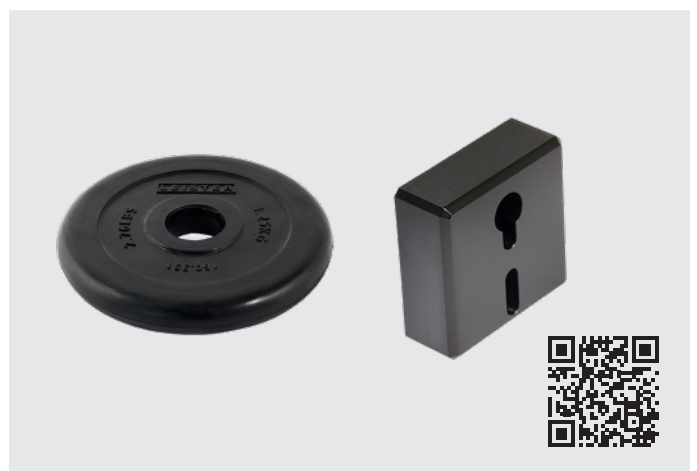
Adjustment tools



Pressure rollers



Weights



Tool storage



Legal Notices

Contents

We endeavor to ensure all information is correct, up-to-date and complete while carefully preparing the contents of this brochure. We cannot assume any liability for the information offered. We reserve the right to change or update all information provided at any time without further notice.

Copyright/Industrial Property Rights

Texts, images, graphics and their arrangement are subject to copyright protection and other protective laws. The reproduction, modification, transfer or publication of part or all of the contents of this brochure is prohibited in any form, except for private, non-commercial purposes.

All marks contained in this brochure (protected trademarks, such as logos and business designations) are the property of Leister AG, Leister Brands AG or third parties and may not be used, copied or distributed without prior written consent.

Modifications

Modifications can be made at any time.

© Leister AG
Galileo-Strasse 10
6056 Kaegiswil
Switzerland

+41 41 662 74 74
leister@leister.com
leister.com



Leister

